

Inhalt



Vergleich PHTG Erweiterung – Gebäude M / P
31.03.17



Vergleich Kosten / Kennwerte	03
Kennwerte Gebäude M / P	05
Kennwerte Erweiterung	07

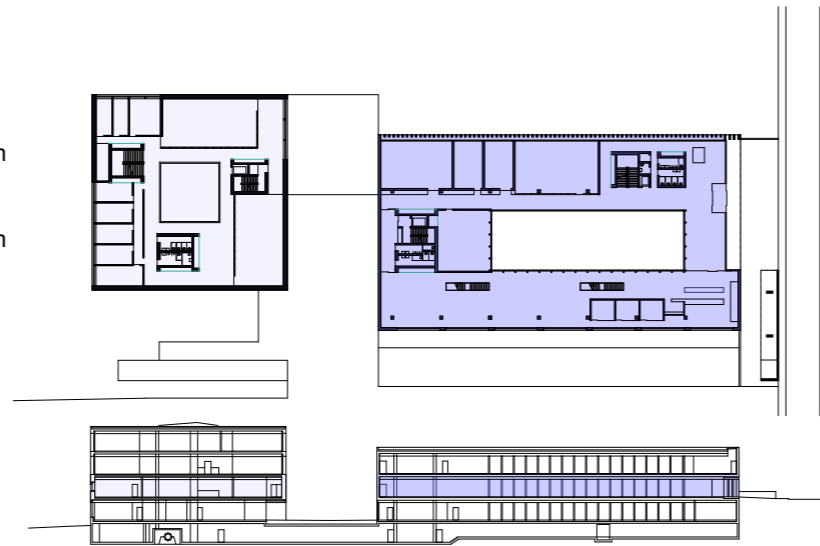
BKP Positionen		Gebäude M/P			Erweiterungsbau		
		Bauabrechnung 06.11.09			Botschaft 10.01.17 / KV 03.11.16		
		Fr.	Fr.	%	Fr.	Fr.	%
0	Grundstückskosten		0	0.0%		2'290'000	8.5%
1	Vorbereitungsarbeiten		132'349	0.4%		1'880'000	7.0%
10	Bestandsaufnahmen, Baugrunduntersuchungen	5'059		0.0%	20'000		0.1%
11	Räumungen, Terrainvorbereitungen	0		0.0%	45'000		0.2%
12	Sicherungen, Provisorien	6'532		0.0%	5'000		0.0%
13	Gemeinsame Baustelleneinrichtung	96'937		0.3%	70'000		0.3%
15	Anpassungen an bestehende Erschliessungsleitungen	4'276		0.0%	400'000		1.5%
17	Spezielle Foundationen, Baugrubensicherungen, Grundwasserabdichtung	0		0.0%	1'320'000		4.9%
19	Honorare	19'545		0.1%	20'000		0.1%
2	Gebäudekosten		29'466'103	96.1%		19'790'000	73.6%
20	Baugrube	750'373		2.4%	1'340'000		5.0%
21	Rohbau 1	11'336'266		37.0%	4'380'000		16.3%
22	Rohbau 2	623'795		2.0%	3'080'000		11.5%
23	Elektroanlagen	2'833'325		9.2%	1'790'000		6.7%
24	Heizungs- und Lüftungsanlagen	3'302'335		10.8%	1'730'000		6.4%
25	Sanitäranlagen	989'690		3.2%	450'000		1.7%
26	Transportanlagen (Aufzüge)	181'915		0.6%	130'000		0.5%
27	Ausbau 1	3'909'839		12.7%	2'840'000		10.6%
28	Ausbau 2	2'592'754		8.5%	1'580'000		5.9%
29	Honorare	2'925'811		9.5%	2'470'000		9.2%
3	Betriebseinrichtungen		0	0.0%		470'000	1.7%
33	Elektroanlagen (Händetrockner, Zimmerbelegungsanzeigen, Mediensteuerung, Monitore Besucherinfo)				115'000		0.4%
34	Heizungs- und Lüftungsanlagen (Luft/Klimatisierung Schulküche)				107'000		0.4%
35	Sanitäranlagen (Kücheneinrichtung Schulküche)				226'900		0.8%
39	Ausbau 2 (Festinstalliertes Mobiliar, z.B. Papierkörbe)				20'000		0.1%
4	Umgebung		443'035	1.4%		920'000	3.4%
40	Terraingestaltung	0		0.0%	55'800		0.2%
41	Roh- und Ausbauarbeiten	0		0.0%	237'800		0.9%
42	Gartenanlagen	412'407		1.3%	252'900		0.9%
44	Installationen	0		0.0%	3'200		0.0%
46	Kleinere Trassenbauten	0		0.0%	297'900		1.1%
49	Honorare	30'628		0.1%	70'000		0.3%
5	Baunebenkosten		527'319	1.7%		460'000	1.7%
6	Reserve		0	0.0%		870'000	3.2%
9	Ausstattung (Kunst am Bau)		120'494	0.4%		200'000	0.7%
Total, inkl. 8% MwSt.			30'669'301	100.0%		26'880'000	100.0%

Kennwert		Gebäude M/P Bauabrechnung 06.11.09			Erweiterungsbau Botschaft 10.01.17 / KV 03.11.16		
GV	Gebäudevolumen SIA 116	m3	47'316		m3	23'628	
GV	Gebäudevolumen SIA 416	m3	45'285		m2	4'878	100.0%
GF	Geschossfläche	m2	10'790	100.0%	m2	2'355	48.3%
HNF	Hauptnutzfläche	m2	4'881	45.2%	m2	610	12.5%
NNF	Nebennutzfläche	m2	1'552	14.4%	m2	1'215	24.9%
VF	Verkehrsfläche	m2	3'062	28.4%			85.7%
				88.0%			
	Verhältnis GV / GF		4.19			4.84	115.5%
	Teuerung April 2009 bis 2016			3%			
	Kosten pro m3 GV in BKP 2		650				
	Kosten pro m3 GV in BKP 2, aufindexiert auf 2016		Fr. 670			Fr. 840	
	Minderkosten für Ausführung in Minergie statt Minergie – P, Annahme 4%				Fr.	-35	
	Minderkosten für Wegfall schwieriger Baugrund, Annahme Fr. 700'000.- in BKP 20				Fr.	-30	
	Effizienzverluste im kubischen Verhältnis GV / GF ggü. Bestandsgebäuden (10 bis 15%)				Fr.	-125	
	Vergleichskosten pro m3 GV in BKP2 Erweiterungsbau unter vergleichbaren Bedingungen zu M/P				Fr. 650		



Vergleichsobjekte							
	Gebäudekosten BKP 2 + 3					Fr.	20'220'000
	Gebäudekosten pro m3 GV in BKP 2 + 3					Fr.	857
	Erweiterung FH für Technik, Rapperswil (2015) – Minergie	GV/GF	4.80	m3	31'295	Fr.	884 103.2%
	Neubau Hochschule für Gestaltung HKG Dreispitz, Basel (2015) – Minergie-P Eco	GV/GF	5.19	m3	61'915	Fr.	826 96.4%
	Neubau Hörsäle und Mediothek PH Graubünden, Chur (2010) – Minergie	GV/GF	6.21	m3	6'279	Fr.	850 99.2%

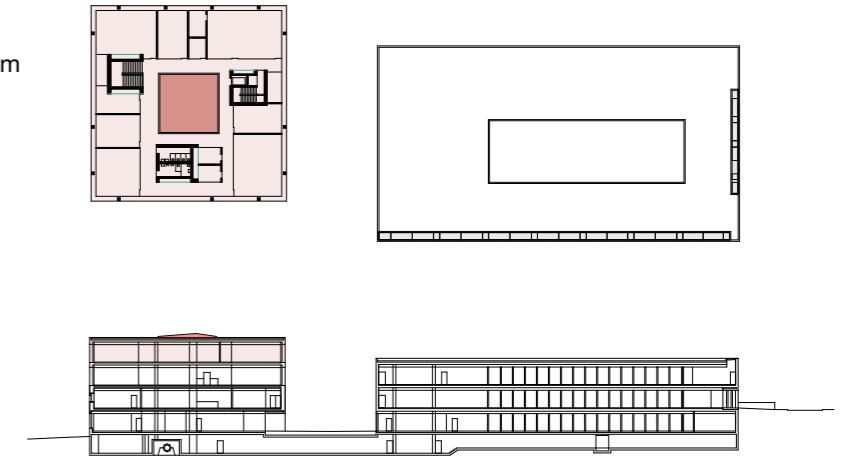
Ebene +1

	GF	= 1'129 m ²	Höhe = 3.95m
	GV	= 4'460 m ³	
	GF	= 1'701 m ²	Höhe = 4.00m
	GV	= 6'804 m ³	
GV_{Total} = 11'264 m³			





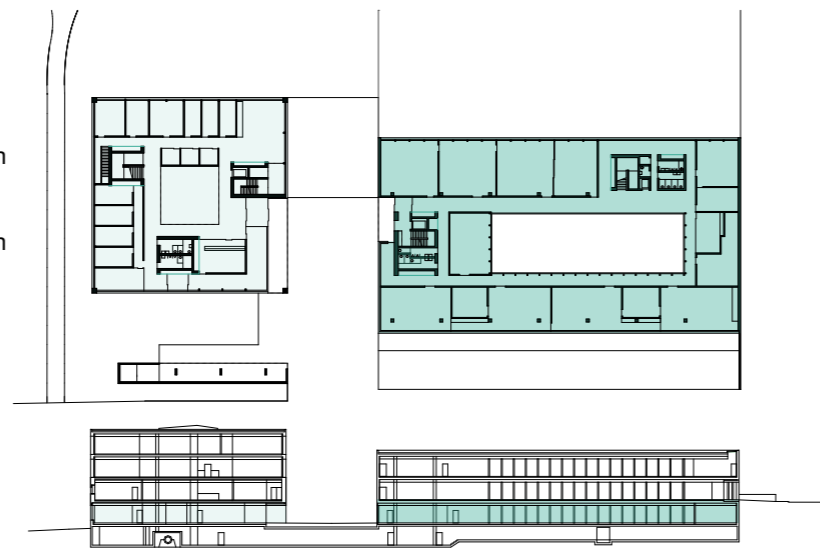
Ebene +3

	GF	= 1'129 m ²	Höhe = 4.01m
	GV	= 4'527 m ³	
	Aufbau Oblichter		
	GV	= 117 m ³	
GV_{Total} = 4'644 m³			

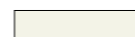



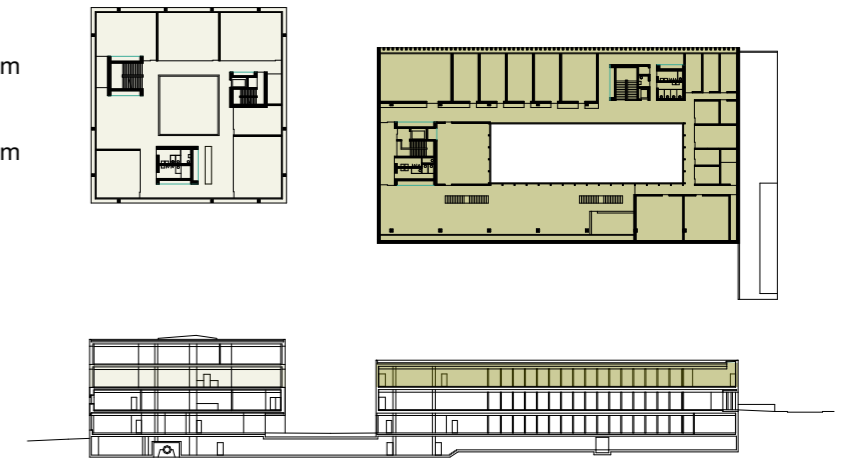
Ebene ±0

	GF	= 1'075 m ²	Höhe = 3.95m
	GV	= 4'426 m ³	
	GF	= 1'737 m ²	Höhe = 4.00m
	GV	= 6'948 m ³	
GV_{Total} = 11'194 m³			





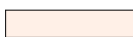



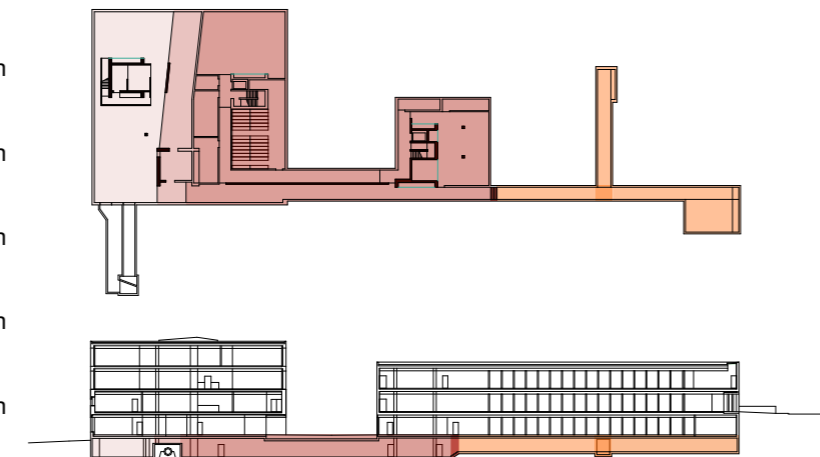
Ebene +2

	GF	= 1'129 m ²	Höhe = 3.95m
	GV	= 4'460 m ³	
	GF	= 1'758 m ²	Höhe = 4.07m
	GV	= 7'155 m ³	
GV_{Total} = 11'615 m³			



Ebene -1

	GF	= 415 m ²	Höhe = 4.11m
	GV	= 1'706 m ³	
	GF	= 180 m ²	Höhe = 1.47m
	GV	= 265 m ³	
	GF	= 931 m ²	Höhe = 4.11m
	GV	= 3'826 m ³	
	GF	= 3 m ²	Höhe = 3.69m
	GV	= 11 m ³	
	GF	= 224 m ²	Höhe = 3.26m
	GV	= 730 m ³	
	GF	= 8 m ²	Höhe = 3.76m
	GV	= 30 m ³	
GV_{Total} = 6'568 m³			



Total GF

GF _{Total} Ebene -1	=	1'761 m ³
GF _{Total} Ebene 0	=	2'812 m ³
GF _{Total} Ebene +1	=	2'830 m ³
GF _{Total} Ebene +2	=	2'887 m ³
GF _{Total} Ebene +3	=	1'129 m ³

GF_{Total} = 10'790 m³

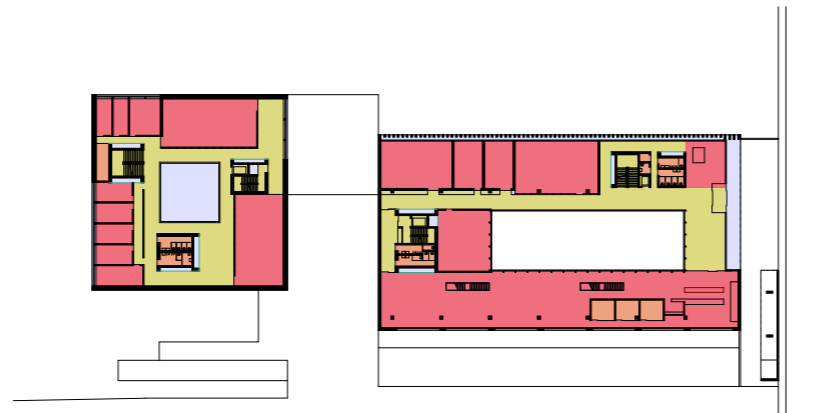
Total GV

GV _{Total} Ebene -1	=	6'568 m ³
GV _{Total} Ebene 0	=	11'194 m ³
GV _{Total} Ebene +1	=	11'264 m ³
GV _{Total} Ebene +2	=	11'615 m ³
GV _{Total} Ebene +3	=	4'644 m ³

GV_{Total} = 45'285 m³

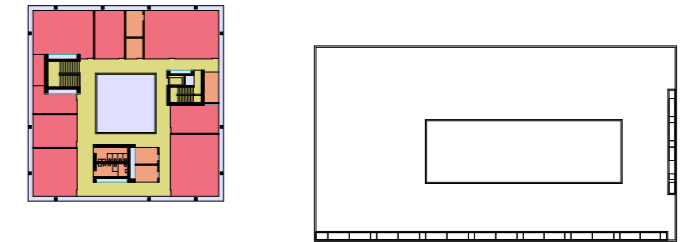
Ebene +1 (Gebäude P / M)

GF	=	1'129 / 1'701	m2
HNF	=	449 / 1'005	m2
NNF	=	41 / 90	m2
VF	=	363 / 396	m2



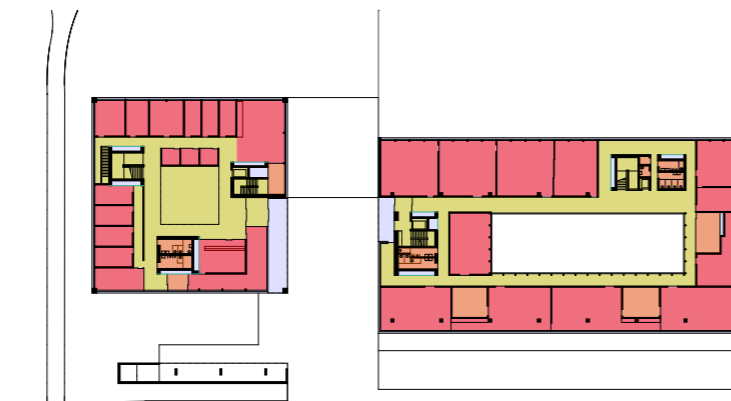
Ebene +3 (Gebäude P)

GF	=	1'129	m2
HNF	=	504	m2
NNF	=	86	m2
VF	=	247	m2



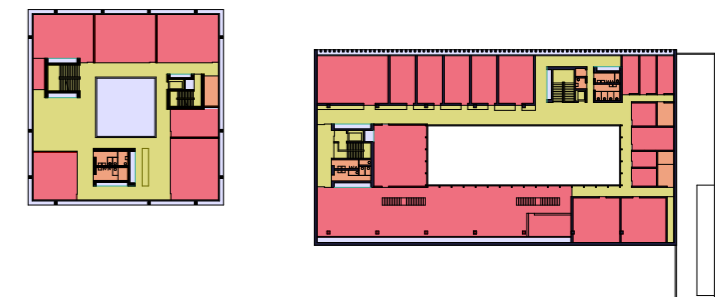
Ebene ±0 (Gebäude P / M)

GF	=	1'075 / 1'737	m2
HNF	=	490 / 957	m2
NNF	=	52 / 143	m2
VF	=	376 / 447	m2



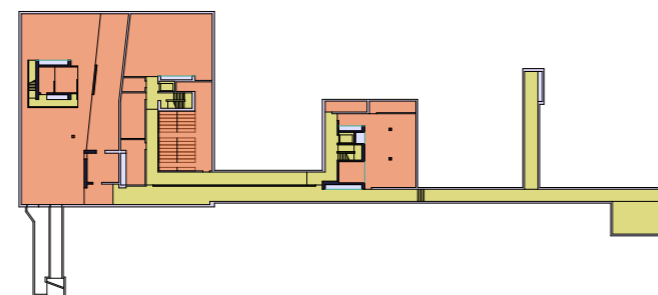
Ebene +2 (Gebäude P / M)

GF	=	1'129 / 1'758	m2
HNF	=	457 / 1'019	m2
NNF	=	40 / 77	m2
VF	=	354 / 384	m2



Ebene -1 (Gebäude P + M)

GF	=	1761	m2
HNF	=	-	m2
NNF	=	1'023	m2
VF	=	495	m2



Total HNF

HNF _{Total} Ebene -1	=	0	m2
HNF _{Total} Ebene 0	=	1'447	m2
HNF _{Total} Ebene +1	=	1'454	m2
HNF _{Total} Ebene +2	=	1'476	m2
HNF _{Total} Ebene +3	=	504	m2

HNF_{Total}	=	4'881	m2
----------------------------	----------	--------------	-----------

Total NNF

NNF _{Total} Ebene -1	=	1'023	m2
NNF _{Total} Ebene 0	=	195	m2
NNF _{Total} Ebene +1	=	131	m2
NNF _{Total} Ebene +2	=	117	m2
NNF _{Total} Ebene +3	=	86	m2

NNF_{Total}	=	1'552	m2
----------------------------	----------	--------------	-----------

Total VF

VF _{Total} Ebene -1	=	495	m2
VF _{Total} Ebene 0	=	823	m2
VF _{Total} Ebene +1	=	759	m2
VF _{Total} Ebene +2	=	738	m2
VF _{Total} Ebene +3	=	247	m2

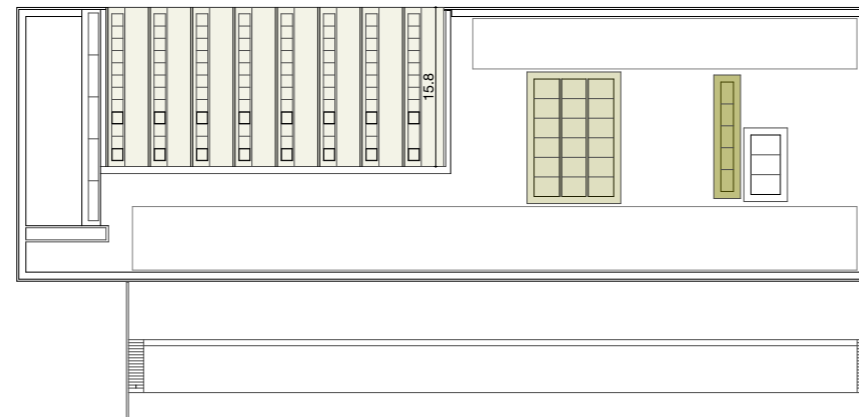
VF_{Total}	=	3'062	m2
---------------------------	----------	--------------	-----------

Dach

GV Shed = 55m² x 15.8m = 869 m³

GV Oblichter = 153m² x 0.30m = 46 m³

GV Total Dach = 915 m³



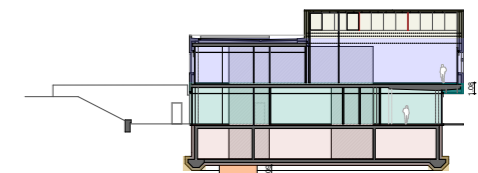
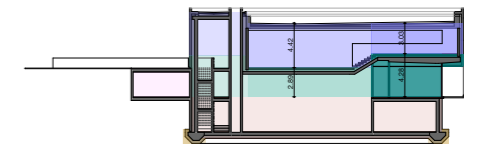
Ebene +1

GV Pausenhalle Vorne = 104m² x 4.42m = 460 m³

GV Pausenhalle Hinten = 69m² x 3.03m = 209 m³

GV Ebene+1 = 2'142m² x 4.42m = 9'468 m³

GV Total Ebene +1 = 10'137 m³



Ebene 0

GV Auskragung = 150m² x 1.08m = 113 m³

GV Pausenhalle tief = 102m² x 2.89m = 295 m³

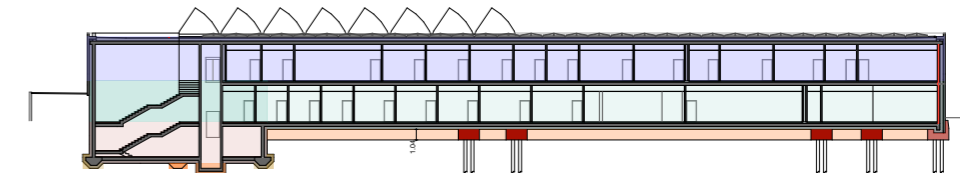
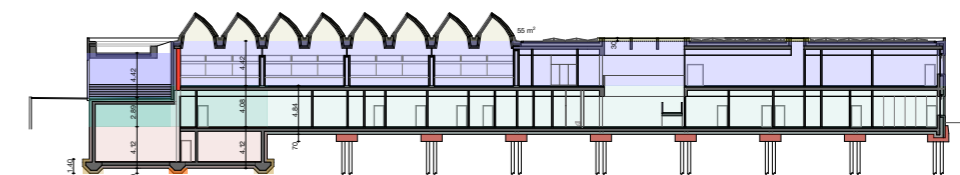
GV Pausenhalle hoch = 58m² x 4.28m = 248 m³

GV Aussengeräte = 49m² x 3.21m = 157 m³

GV E±0 Unterkellert = 271m² x 4.08m = 1'106 m³

GV E±0 Nicht Unterkell. = 1'713m² x 4.84m = 8'291 m³

GV Total Ebene ±0 = 10'210 m³



Ebene -1

GV Ebene-1 = 431m² x 4.12m = 1'776 m³

GV Fund. Stützen = 16 x 4m² x 0.70m = 45 m³

GV Streifenf. unter E0 = 299 m² x 1.04m = 311 m³

GV Streifenf. unter E1 = 35 m² x 0.5m = 18 m³

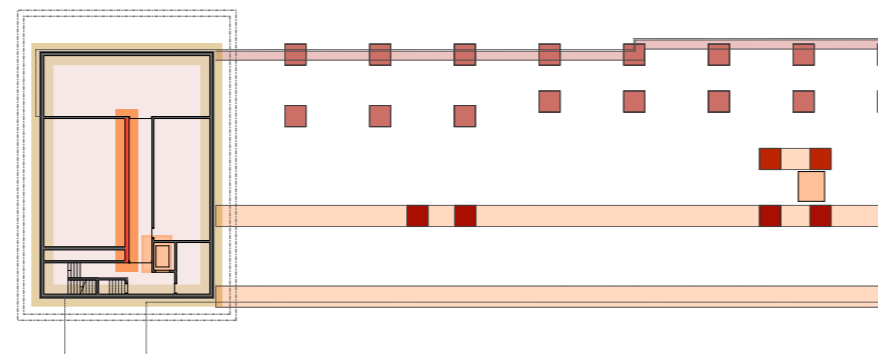
GV Streifenf. unter E1 = 96 m² x 1.4m = 134 m³

GV Streifenf. unter E1 = 122 m² x 0.5m = 61 m³

GV Lift West = 11 m² x 1.09m = 12 m³

GV Lift Ost = 8 m² x 1.09m = 9 m³

GV Total Ebene -1 = 2'366 m³



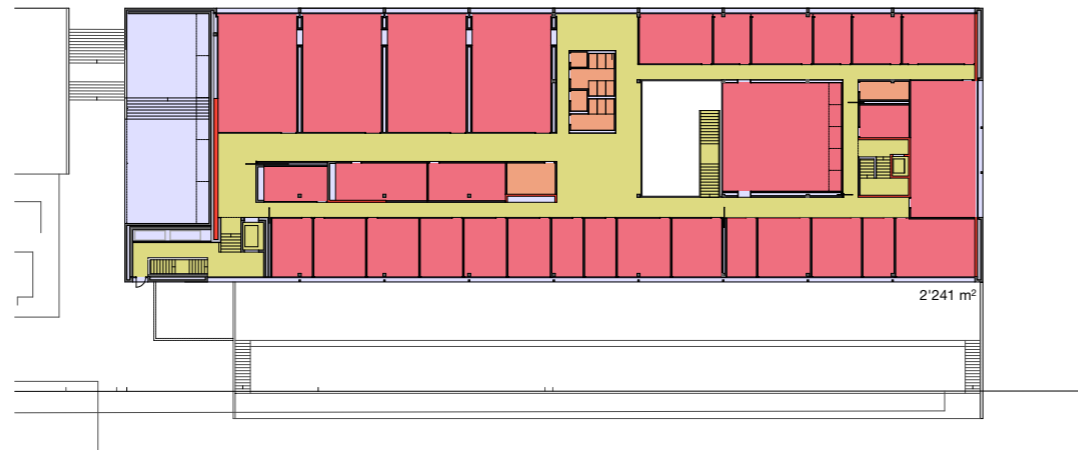
Total GV

GV _{Total} Ebene -1	=	2'366 m ³
GV _{Total} Ebene 0	=	10'210 m ³
GV _{Total} Ebene +1	=	10'137 m ³
GV _{Total} Dach	=	915 m ³



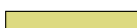
GV_{Total} = 23'628 m³

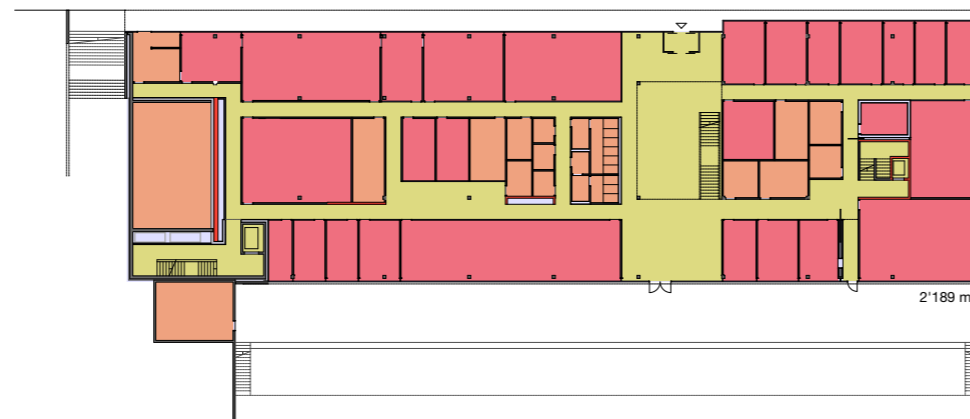
Ebene +1

	GF	= 2'241 m ²
	HNF	= 1'235 m ²
	NNF	= 54 m ²
	VF	= 529 m ²




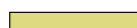


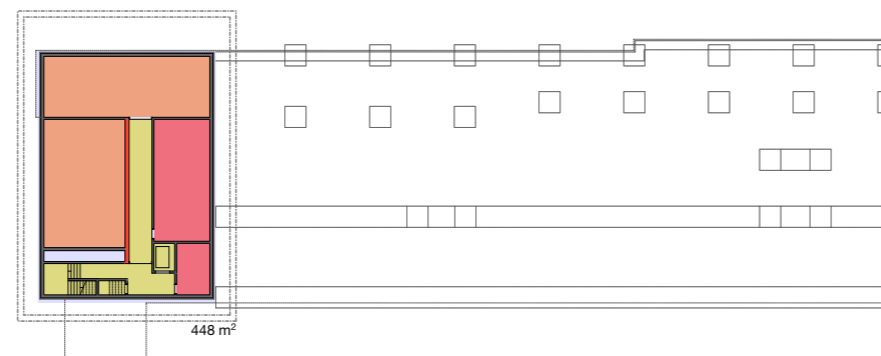
Ebene 0

	GF	= 2'189 m ²
	HNF	= 1'036 m ²
	NNF	= 357 m ²
	VF	= 610 m ²




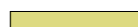


Ebene -1

	GF	= 448 m ²
	HNF	= 84 m ²
	NNF	= 199 m ²
	VF	= 76 m ²



Total Kennwerte

	GF	= 4'878 m ²
	HNF	= 2'355 m ²
	NNF	= 610 m ²
	VF	= 1'215 m ²