

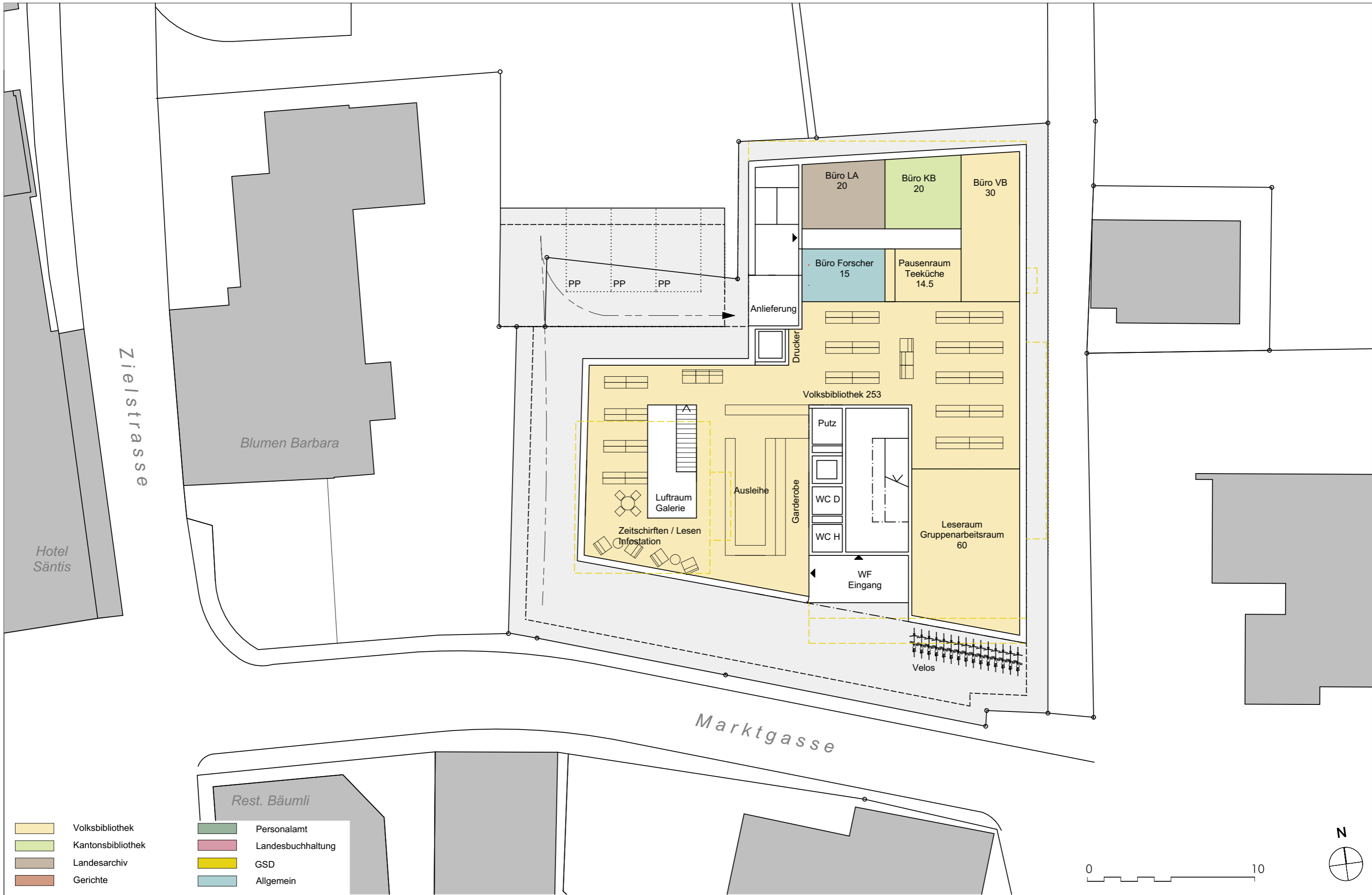
BAUVORHABEN:  
 Machbarkeitsstudie  
 Neues Verwaltungsgebäude "Alter Coop"  
 Marktgasse 14 /16  
 9050 Appenzell

PLANTITEL:  
 Machbarkeitsstudie  
 Situation 1:500

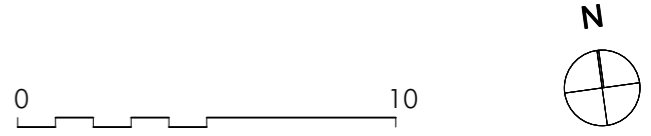
MASSSTAB:  
 1:500

DATUM:  
 03.08.18  
 23.08.18

PLANNUMMER:  
**MS17/01 00\_3**



- |  |  |
|--|--|
| <span style="display:inline-block; width:15px; height:10px; background-color:#fff9c4; border:1px solid black;"></span> Volksbibliothek   | <span style="display:inline-block; width:15px; height:10px; background-color:#4caf50; border:1px solid black;"></span> Personalamt       |
| <span style="display:inline-block; width:15px; height:10px; background-color:#c8e6c9; border:1px solid black;"></span> Kantonsbibliothek | <span style="display:inline-block; width:15px; height:10px; background-color:#e91e63; border:1px solid black;"></span> Landesbuchhaltung |
| <span style="display:inline-block; width:15px; height:10px; background-color:#a1887f; border:1px solid black;"></span> Landesarchiv      | <span style="display:inline-block; width:15px; height:10px; background-color:#ffeb3b; border:1px solid black;"></span> GSD               |
| <span style="display:inline-block; width:15px; height:10px; background-color:#d7ccc8; border:1px solid black;"></span> Gerichte          | <span style="display:inline-block; width:15px; height:10px; background-color:#4dd0e1; border:1px solid black;"></span> Allgemein         |



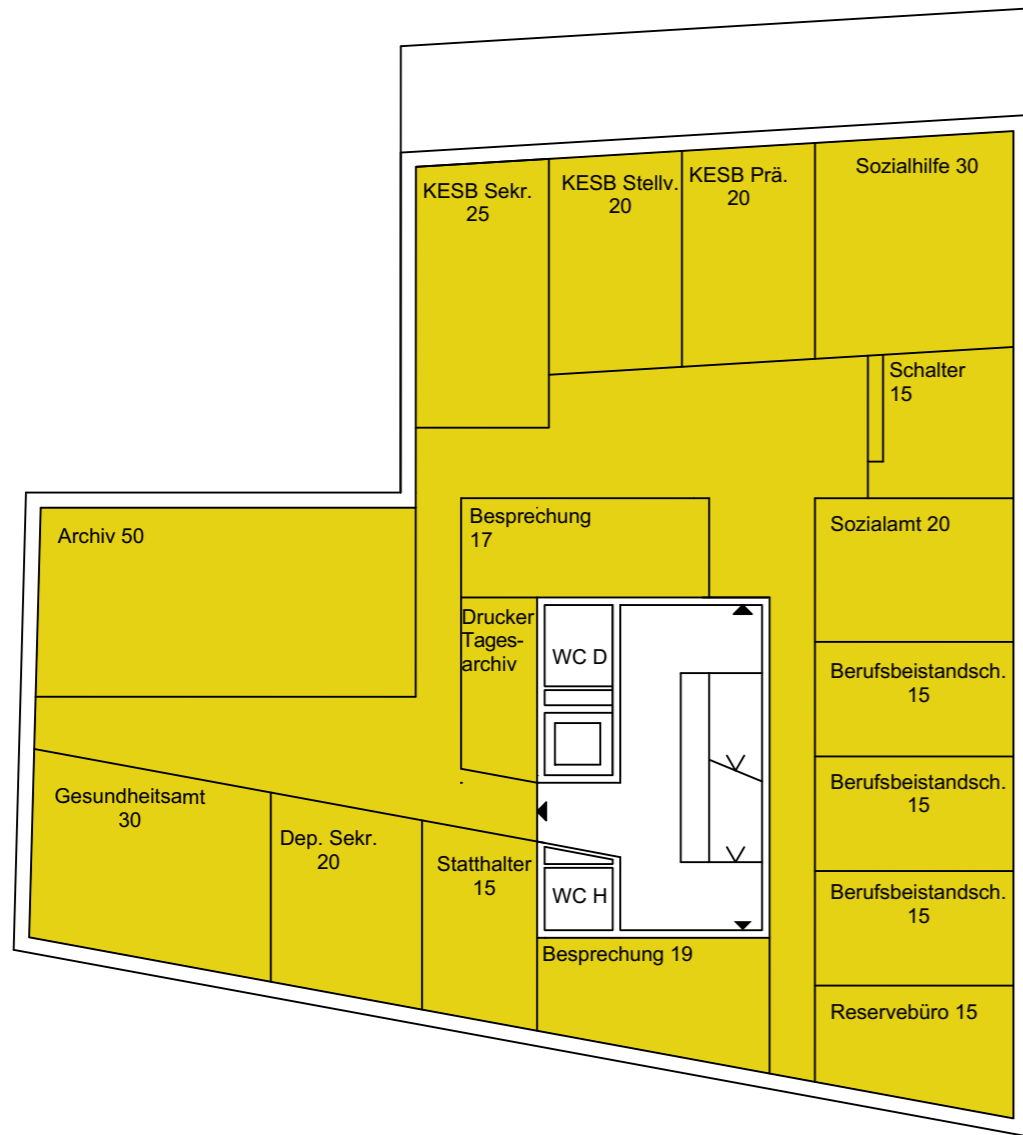
BAUVORHABEN:  
**Machbarkeitsstudie**  
 Neues Verwaltungsgebäude "Alter Coop"  
 Marktgasse 14 /16  
 9050 Appenzell

PLANTITEL:  
 Machbarkeitsstudie  
**Situation Erdgeschoss**

MASSTAB:  
 1:200

DATUM:  
 03.08.18  
 23.08.18

PLANNUMMER:  
**MS17/01 01\_3**

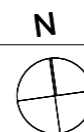


1. Obergeschoss



2. Obergeschoss

- |  |                   |   |                   |
|--|-------------------|---|-------------------|
|  | Volksbibliothek   |  | Personalamt       |
|  | Kantonsbibliothek |  | Landesbuchhaltung |
|  | Landesarchiv      |  | GSD               |
|  | Gerichte          |  | Allgemein         |



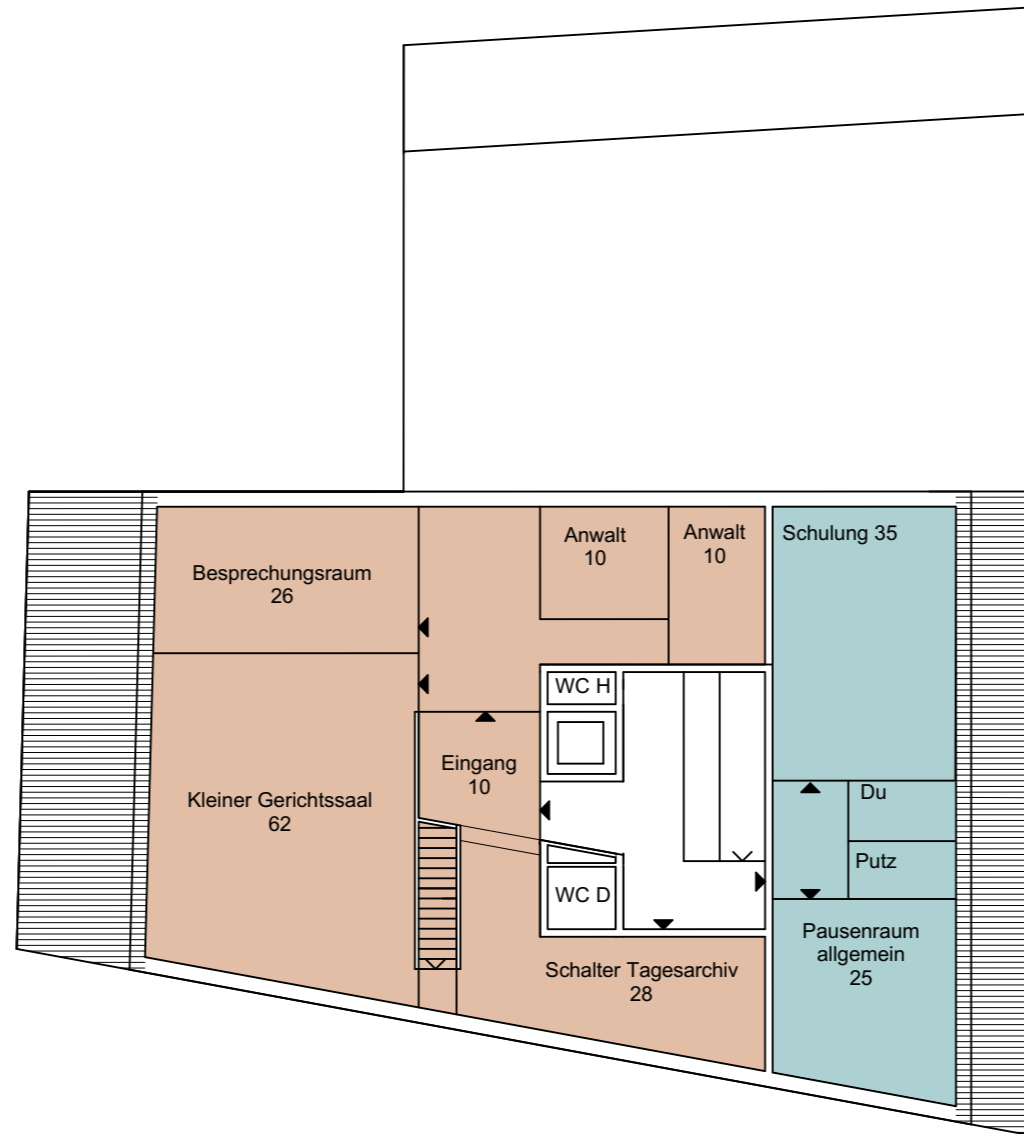
BAUVORHABEN:  
**Machbarkeitsstudie**  
 Neues Verwaltungsgebäude "Alter Coop"  
 Marktgasse 14 /16  
 9050 Appenzell

PLANTITEL:  
 Machbarkeitsstudie  
**Obergeschoisse**

MASSSTAB:  
 1:200

DATUM:  
 03.08.18  
 23.08.18

PLANNUMMER:  
**MS17/01 02\_3**



- |   |   |
|---|---|
| <span style="display: inline-block; width: 15px; height: 10px; background-color: #fff9c4; border: 1px solid black;"></span> Volksbibliothek   | <span style="display: inline-block; width: 15px; height: 10px; background-color: #8bc34a; border: 1px solid black;"></span> Personalamt       |
| <span style="display: inline-block; width: 15px; height: 10px; background-color: #c8e6c9; border: 1px solid black;"></span> Kantonsbibliothek | <span style="display: inline-block; width: 15px; height: 10px; background-color: #e91e63; border: 1px solid black;"></span> Landesbuchhaltung |
| <span style="display: inline-block; width: 15px; height: 10px; background-color: #d7ccc8; border: 1px solid black;"></span> Landesarchiv      | <span style="display: inline-block; width: 15px; height: 10px; background-color: #ffeb3b; border: 1px solid black;"></span> GSD               |
| <span style="display: inline-block; width: 15px; height: 10px; background-color: #e67e22; border: 1px solid black;"></span> Gerichte          | <span style="display: inline-block; width: 15px; height: 10px; background-color: #81c784; border: 1px solid black;"></span> Allgemein         |



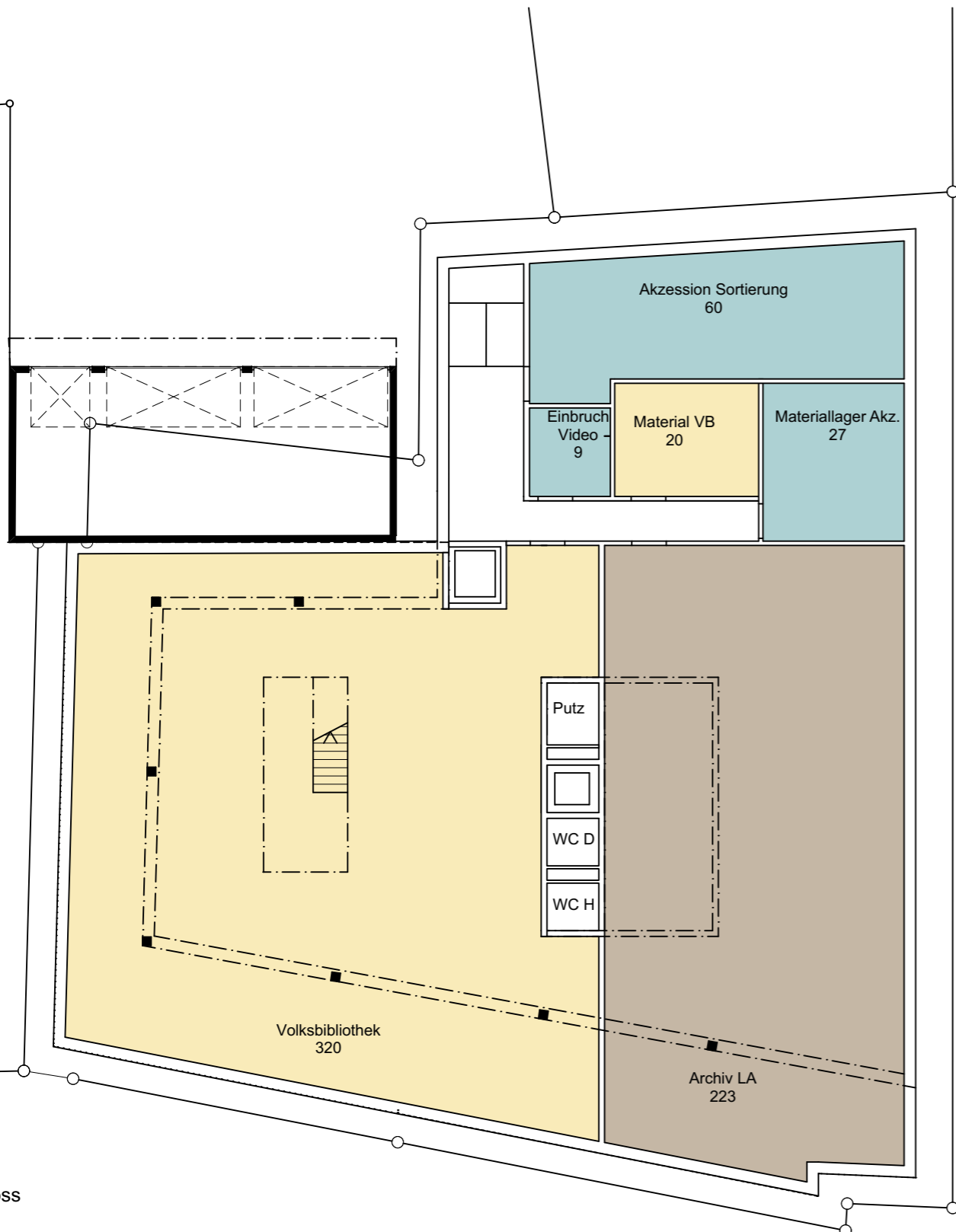
BAUVORHABEN:  
**Machbarkeitsstudie**  
 Neues Verwaltungsgebäude "Alter Coop"  
 Marktgasse 14 /16  
 9050 Appenzell

PLANTITEL:  
 Machbarkeitsstudie  
**Dachgeschoss**

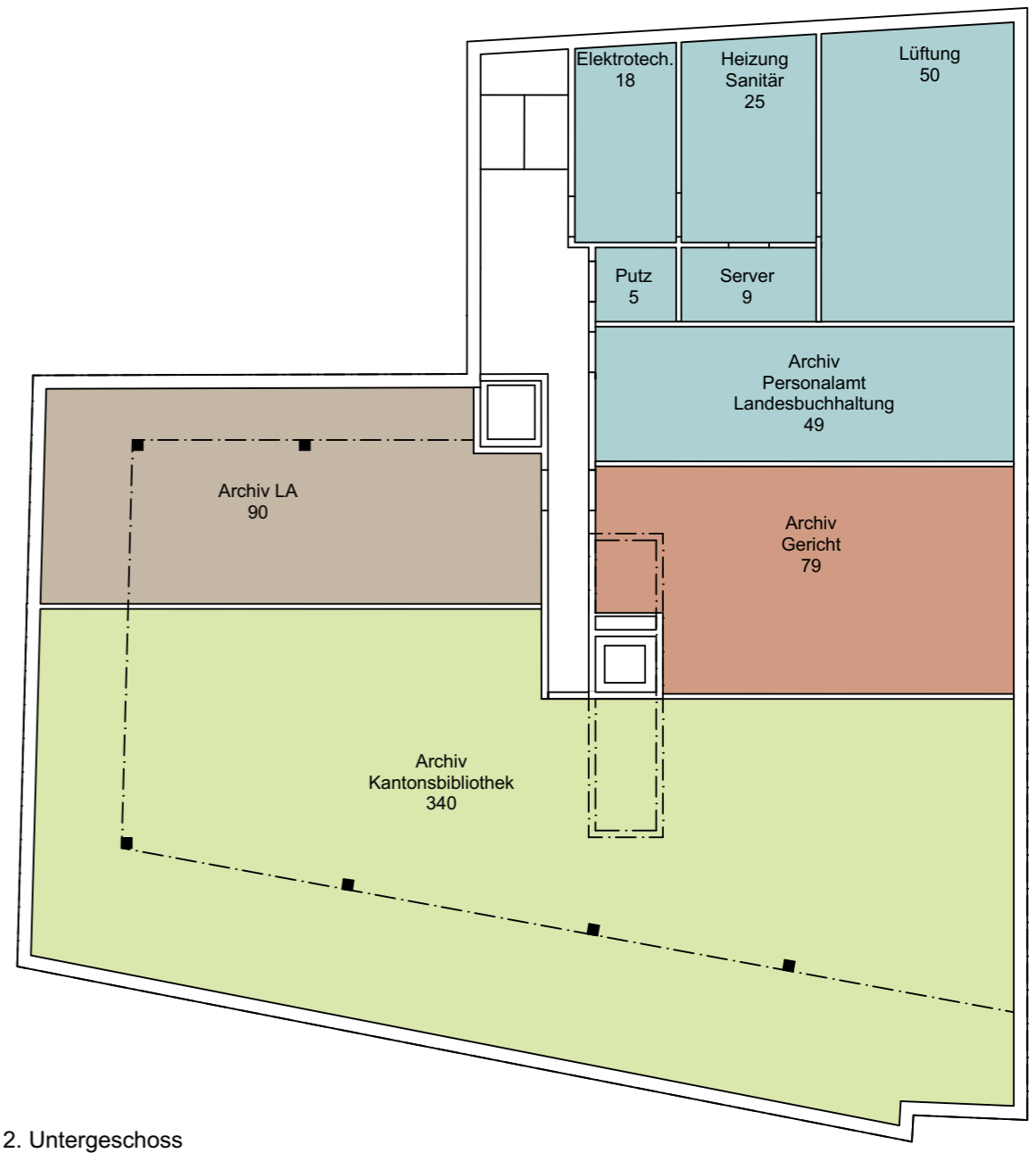
MASSSTAB:  
 1:200

DATUM:  
 03.08.18  
 23.08.18

PLANNUMMER:  
**MS17/01 03\_3**

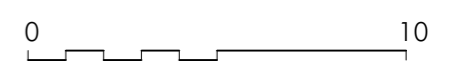


1. Untergeschoss



2. Untergeschoss

- |  |   |  |   |
|--|---|--|---|
| <span style="display:inline-block; width:15px; height:10px; background-color:yellow; border:1px solid black;"></span> Volksbibliothek  | <span style="display:inline-block; width:15px; height:10px; background-color:lightgreen; border:1px solid black;"></span> Kantonsbibliothek | <span style="display:inline-block; width:15px; height:10px; background-color:lightblue; border:1px solid black;"></span> Personalamt | <span style="display:inline-block; width:15px; height:10px; background-color:lightcoral; border:1px solid black;"></span> Landesbuchhaltung |
| <span style="display:inline-block; width:15px; height:10px; background-color:lightbrown; border:1px solid black;"></span> Landesarchiv | <span style="display:inline-block; width:15px; height:10px; background-color:yellow; border:1px solid black;"></span> GSD                   | <span style="display:inline-block; width:15px; height:10px; background-color:lightblue; border:1px solid black;"></span> Allgemein   |   |



BAUVORHABEN: <b>Machbarkeitsstudie</b> Neues Verwaltungsgebäude "Alter Coop" Marktgasse 14 /16 9050 Appenzell	PLANTITEL: Machbarkeitsstudie <b>Untergeschosse</b>	MASSSTAB: 1:200	DATUM: 03.08.18 23.08.18	PLANNUMMER: <b>MS17/01 04_3</b>
---	---	--------------------	--------------------------------	------------------------------------