

LAVEGGIO, un fiume da vivere

FORMATO A1	DATA 01.02.22	DIS CF
Nome File: 156_DC_220124_CF_tavole DC.pln		
Dett. 2 MEANDRI		
ARCHITETTO Atelier PeR Sagl	Androni 20 - 6850 Mendrisio	Carlo Romano 076 616 52 68

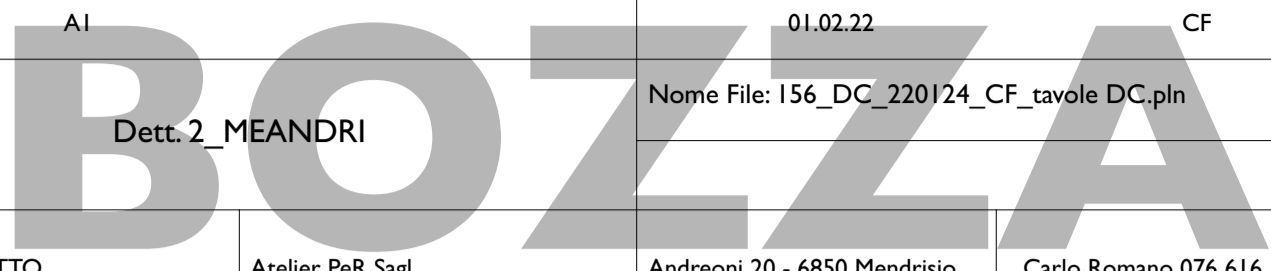


FOTO 1

FOTO 2

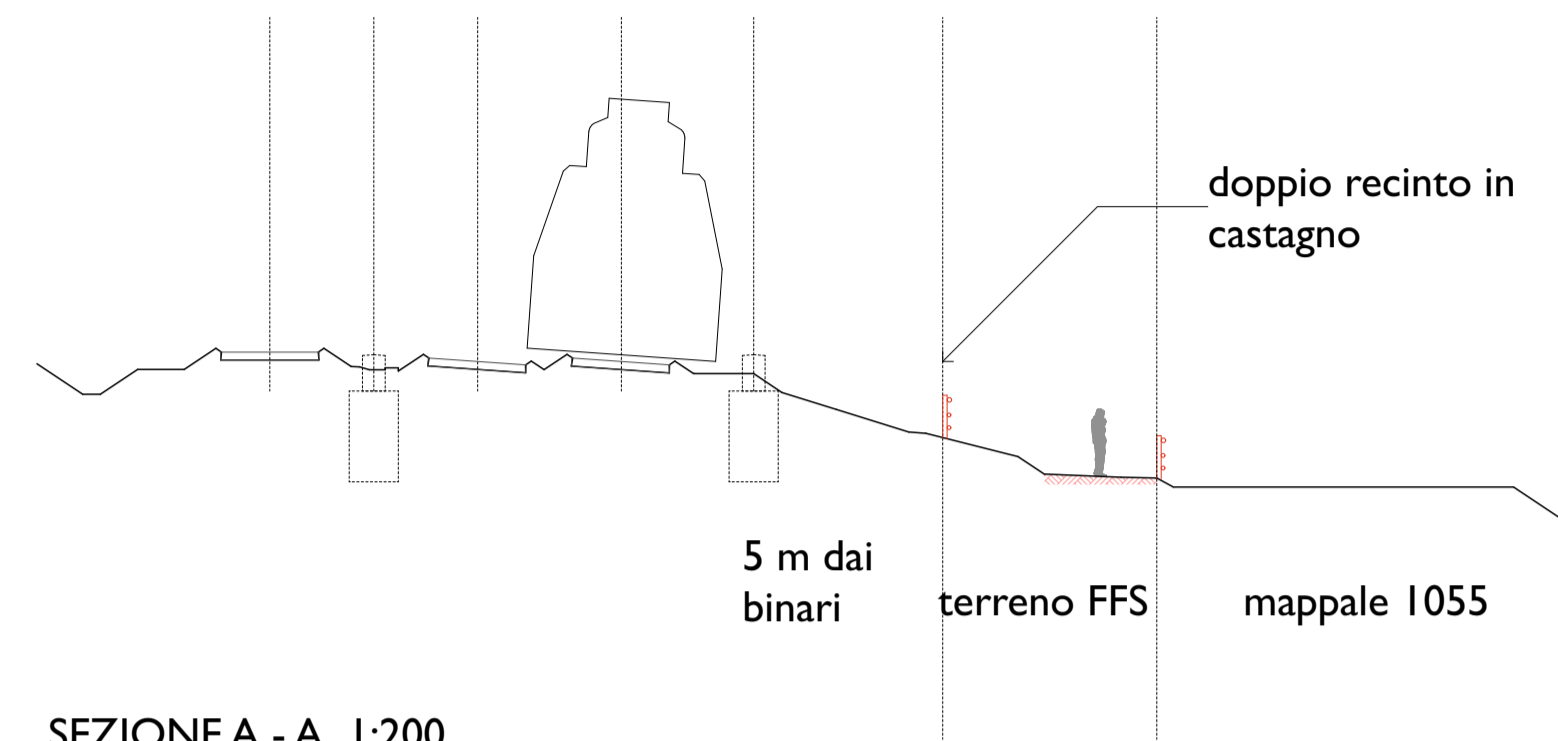
FOTO 3

FOTO 4

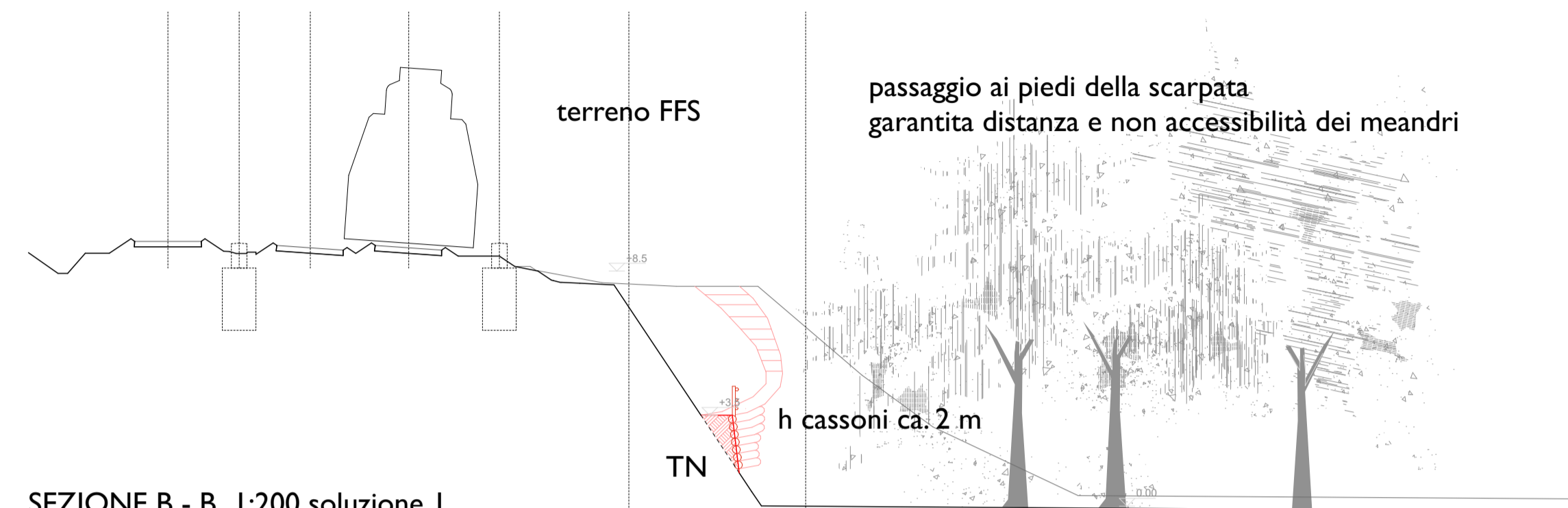
FOTO 5

2.75 2.75 3.80 3.50 5.00 6.10

2.75 2.75 3.80 3.50 5.00



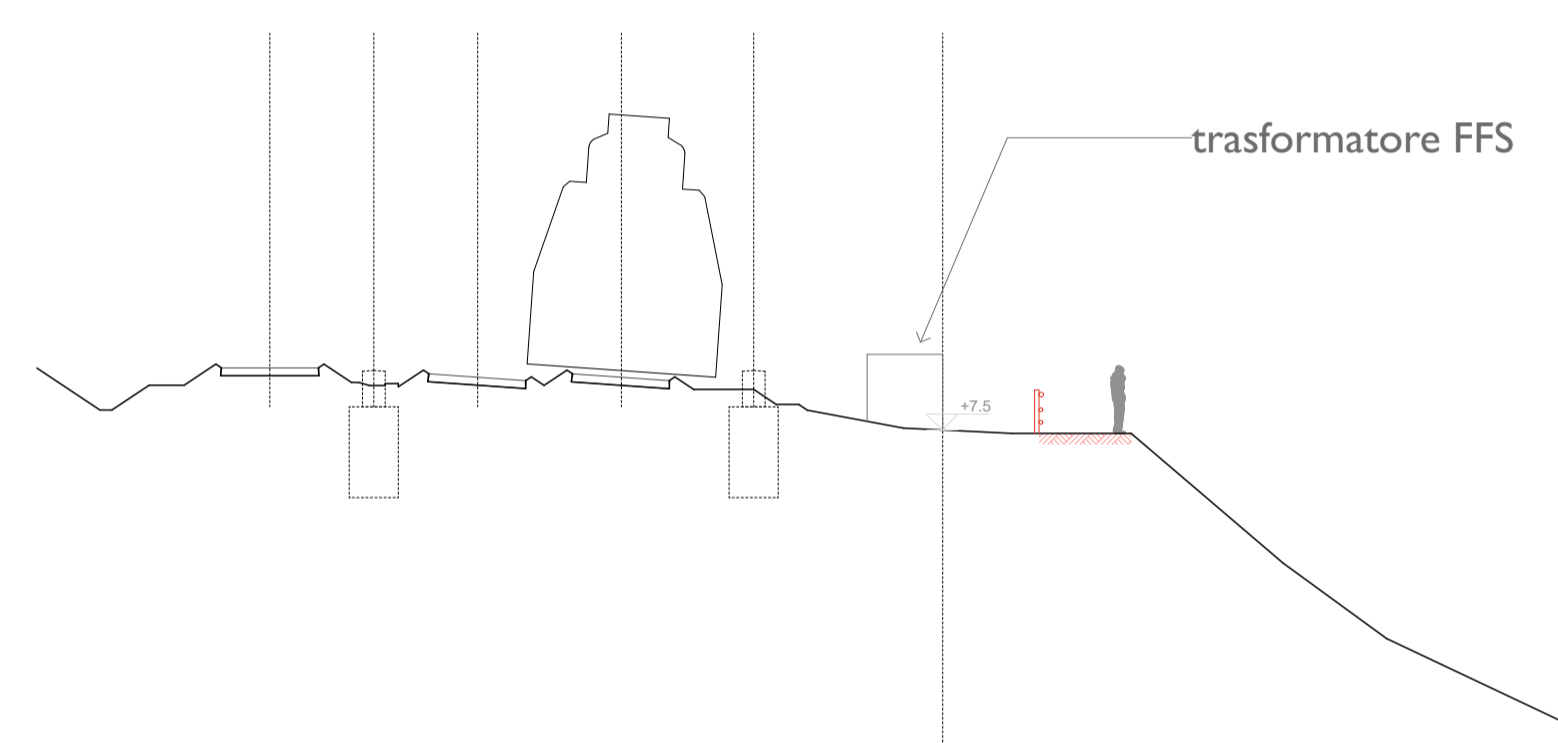
SEZIONE A - A 1:200



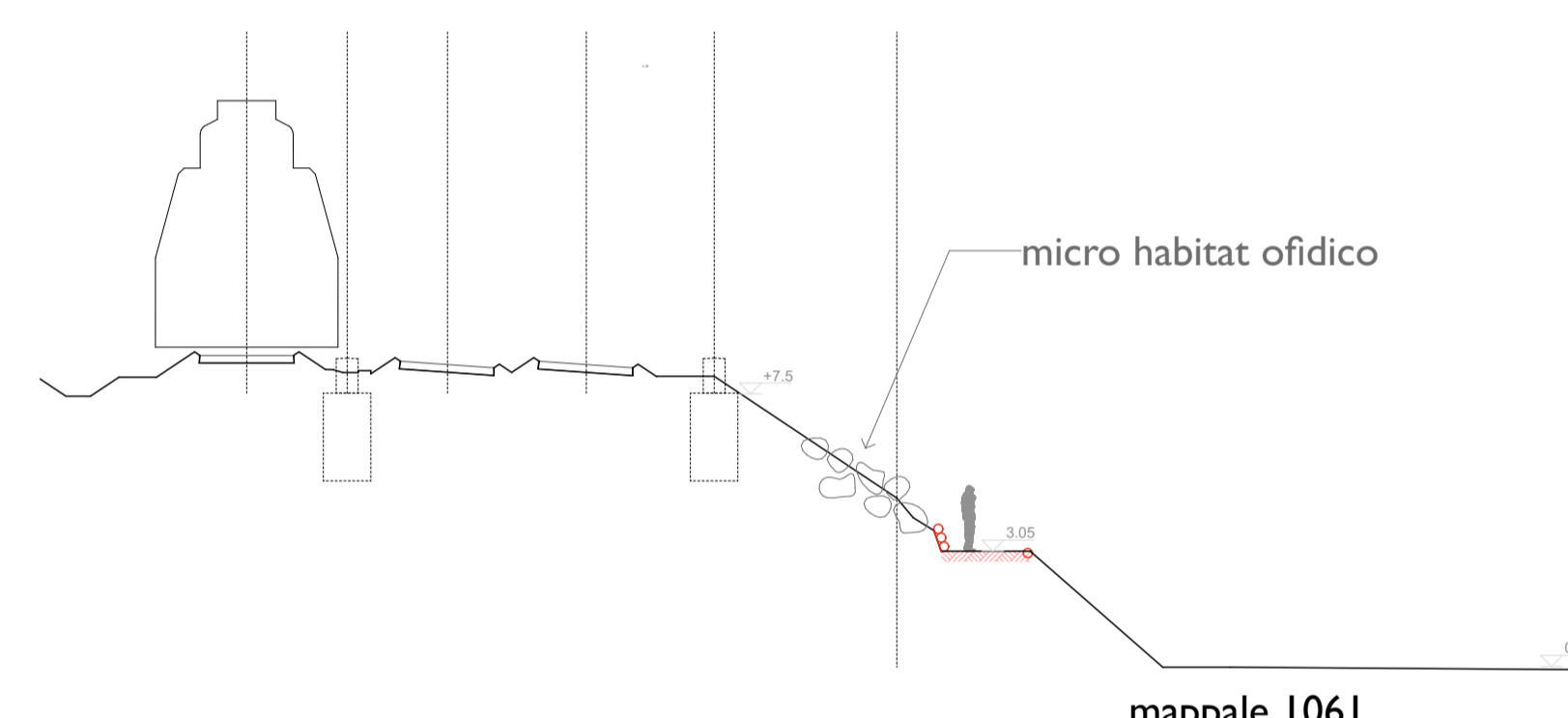
SEZIONE B - B 1:200 soluzione I

2.75 2.75 3.80 3.50 5.00

2.75 2.75 3.80 3.50 5.00

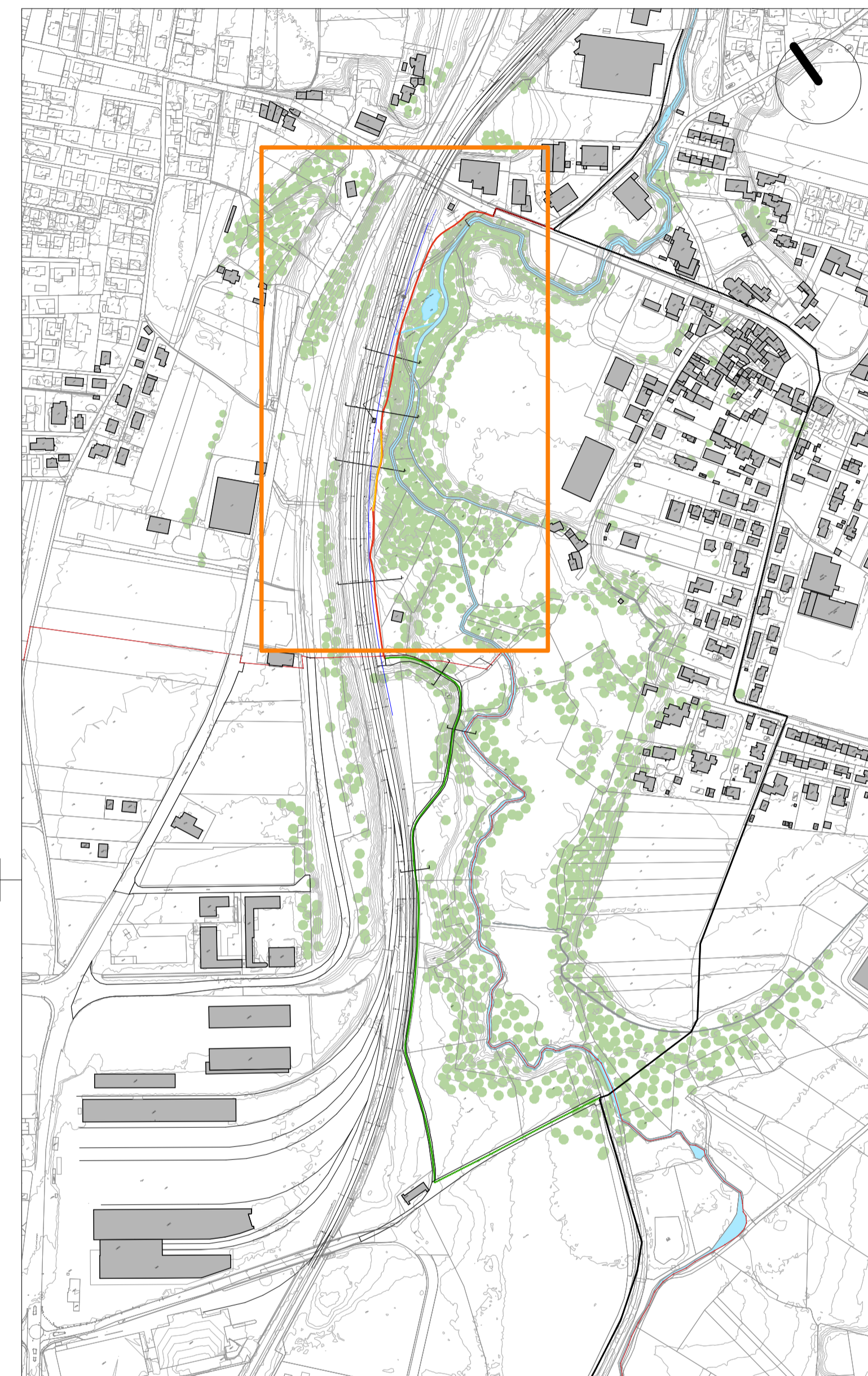


SEZIONE C - C 1:200

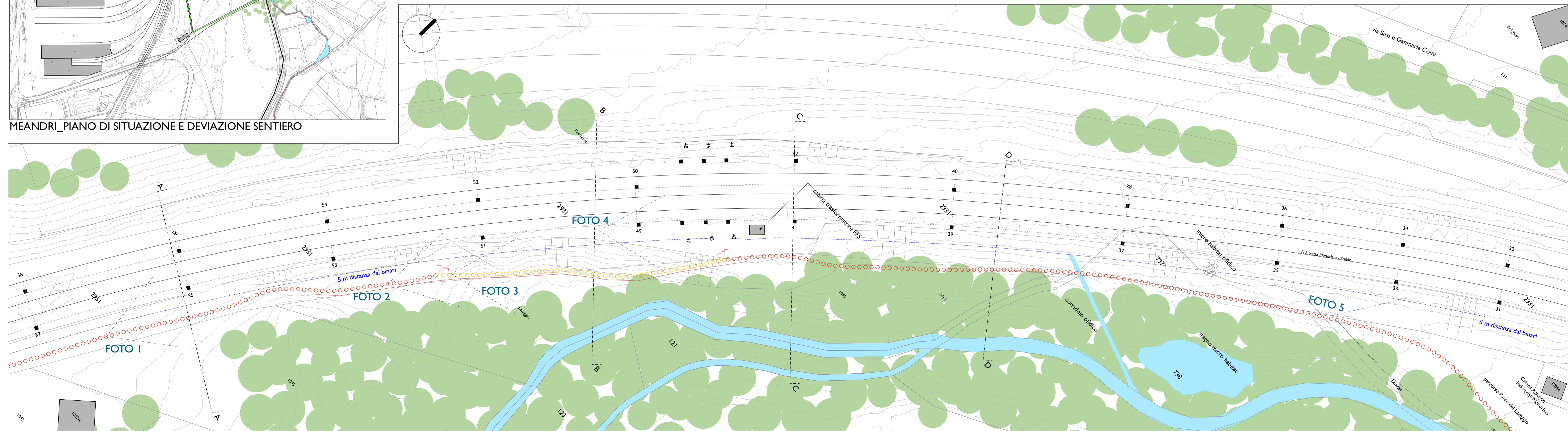


SEZIONE D - D 1:200

- ○ ○ ○ ○ PERCORSO ESISTENTE STERRATO
- ◇ ◇ ◇ ◇ ◇ PERCORSO ESISTENTE ASFALTATO
- ● ● ● ● NUOVO PERCORSO STERRATO
- ◆ ◆ ◆ ◆ ◆ NUOVO PERCORSO ASFALTATO
- ○ ○ ○ ○ NUOVO PERCORSO SU SENTIERO ESISTENTE
- ◇ ◇ ◇ ◇ ◇ NUOVO PERCORSO SU STRADA ESISTENTE
- ○ ○ ○ ○ NUOVO PERCORSO COSTRUITO
- ○ ○ ○ ○ MODIFICA MORFOLOGIA TERRENO



MEANDRI_PIANO DI SITUAZIONE E DEVIATIONE SENTIERO



ZOOM 1:500

LAVEGGIO, un fiume da vivere

FORMATO A1	DATA 01.02.22	DIS CF
Nome File: 156_DC_220124_CF_tavole DC.pln		
Dett. 3_SVINCOLO		
ARCHITETTO	Atelier PeR Sagl	Carlo Romano 076 616 52 68

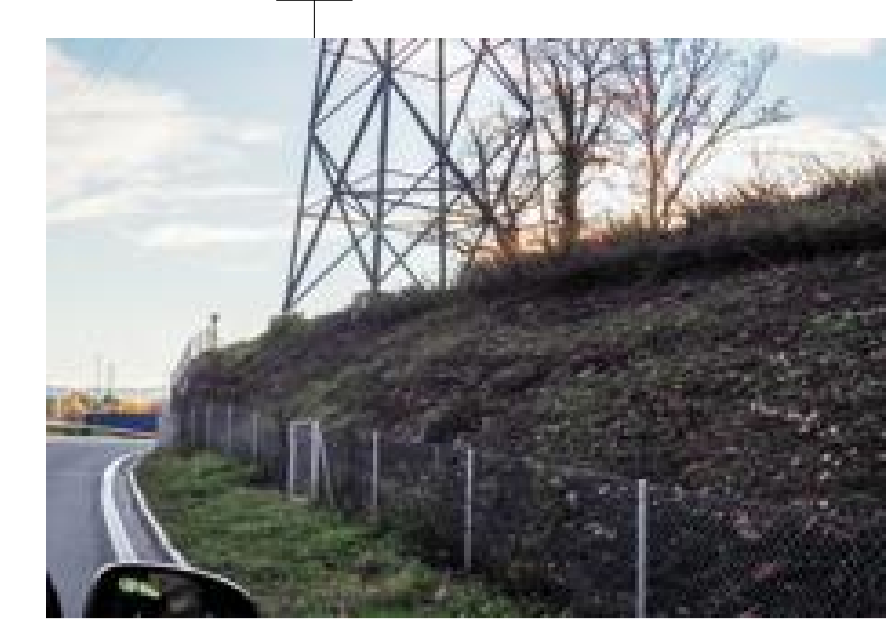


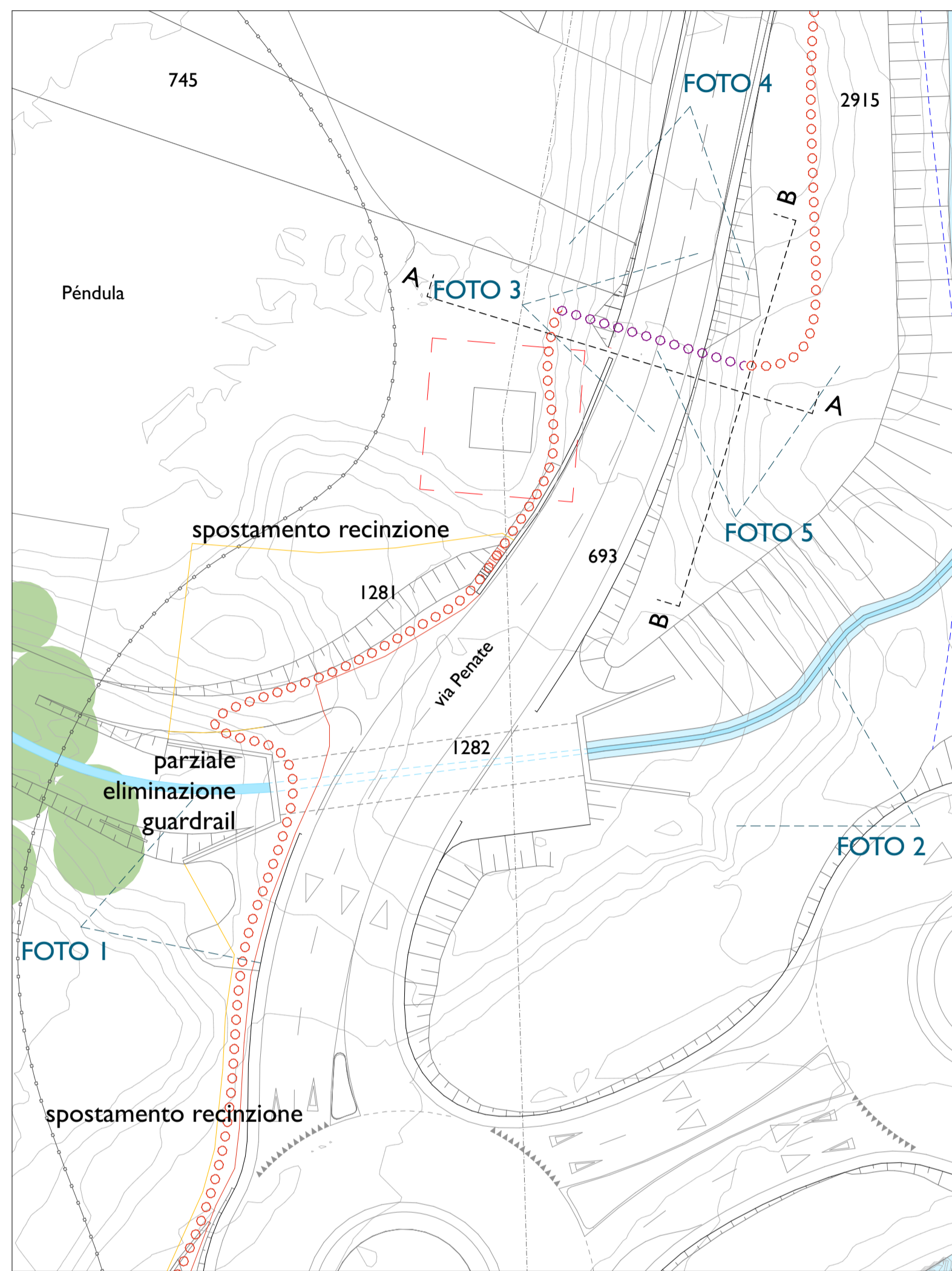
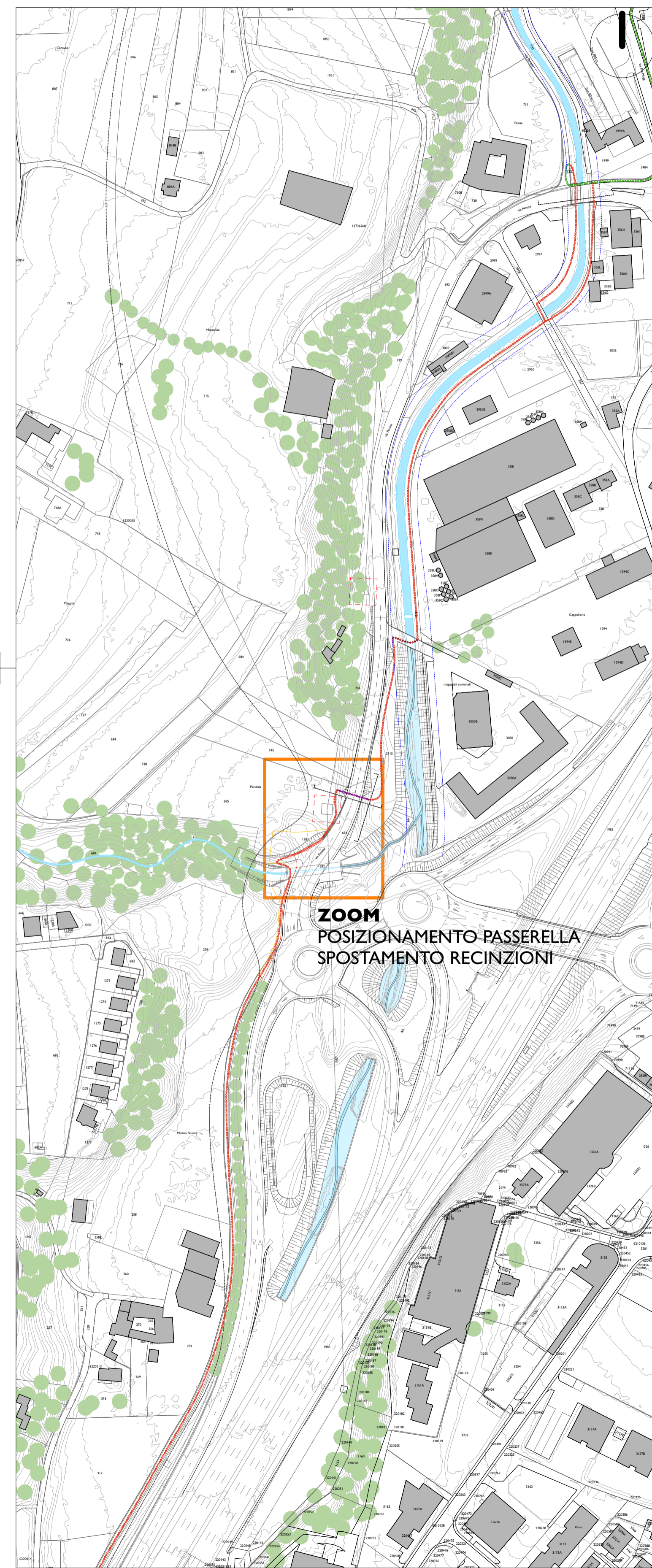
FOTO 1

FOTO 2

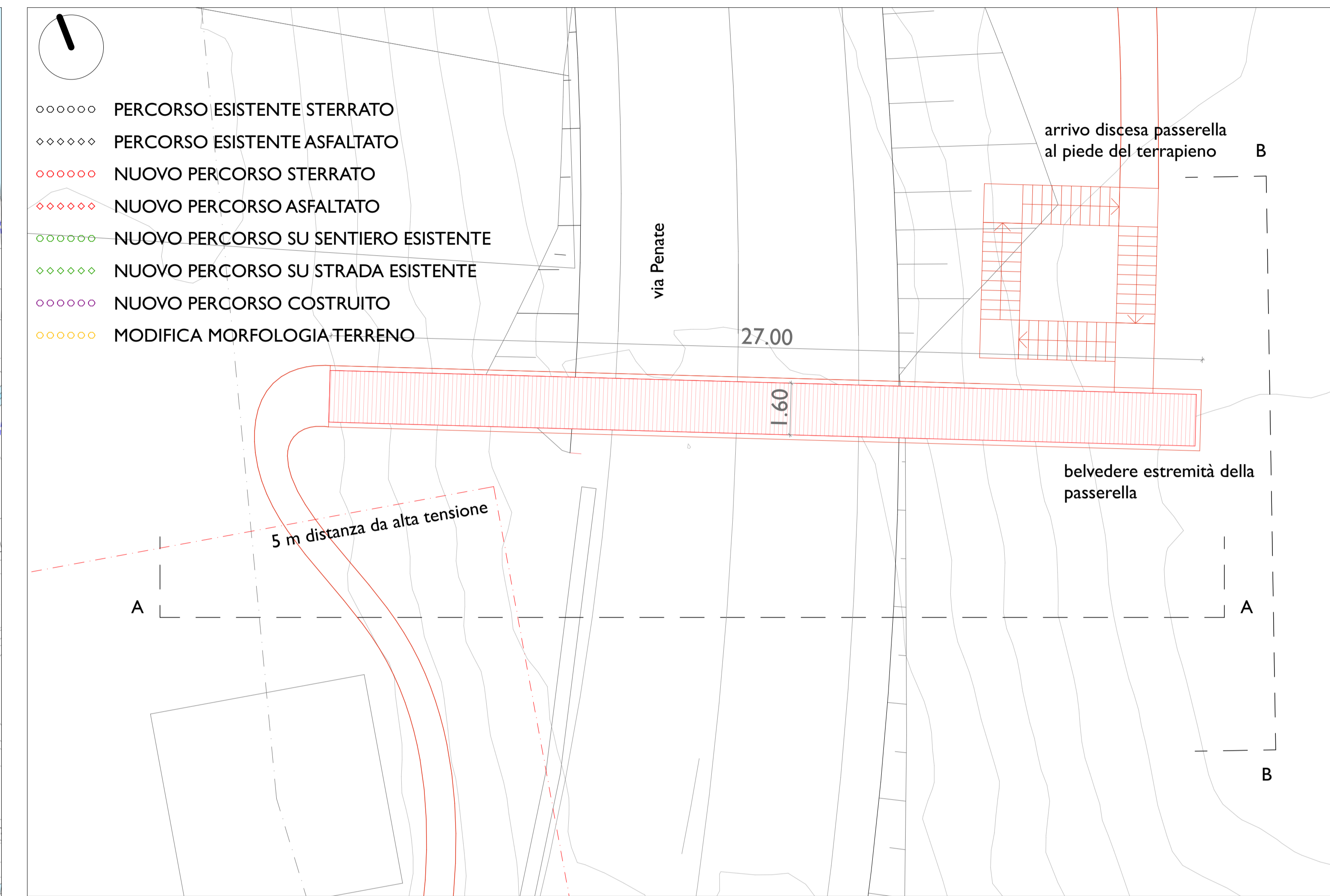
FOTO 3

FOTO 4

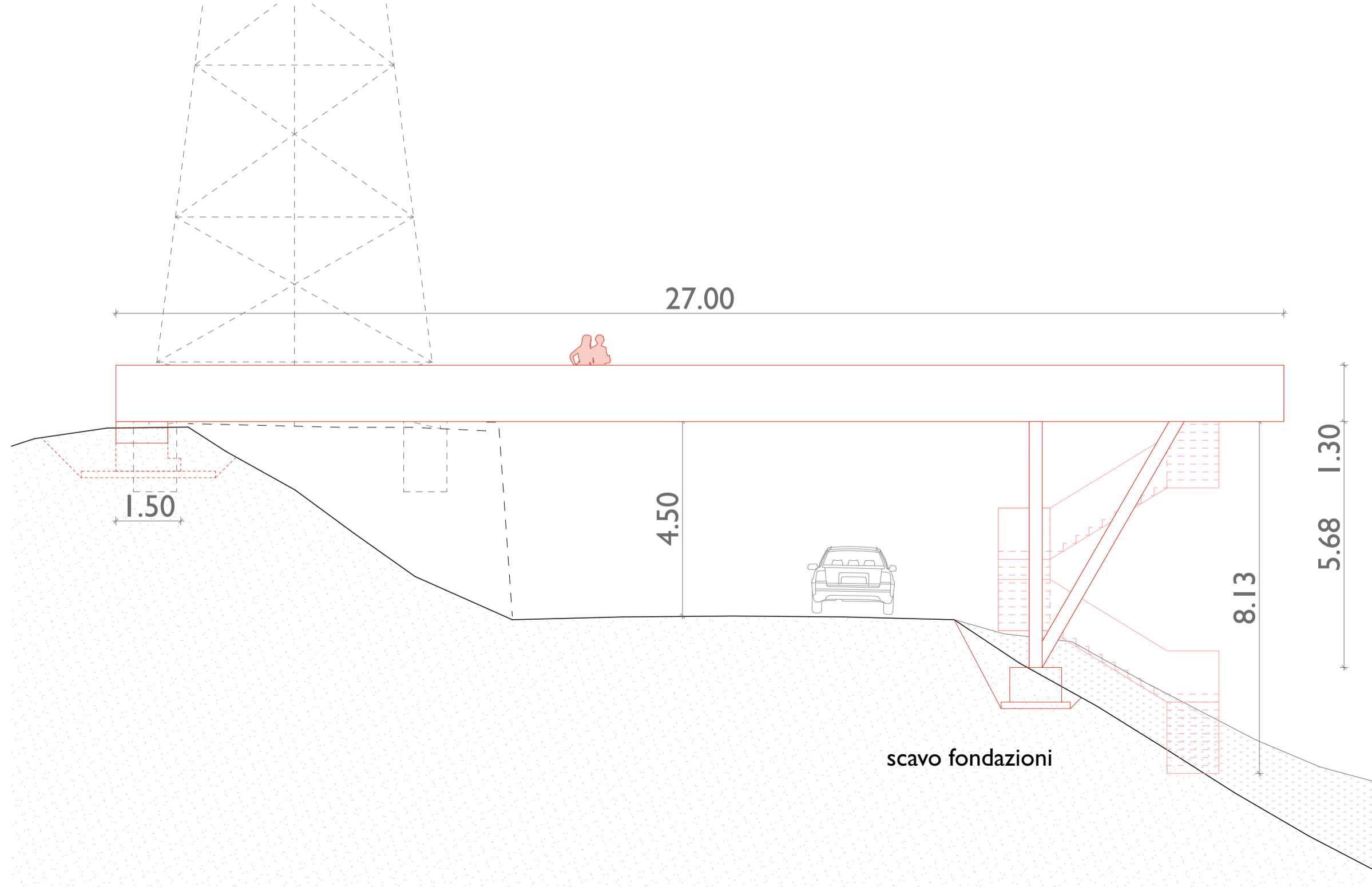
FOTO 5



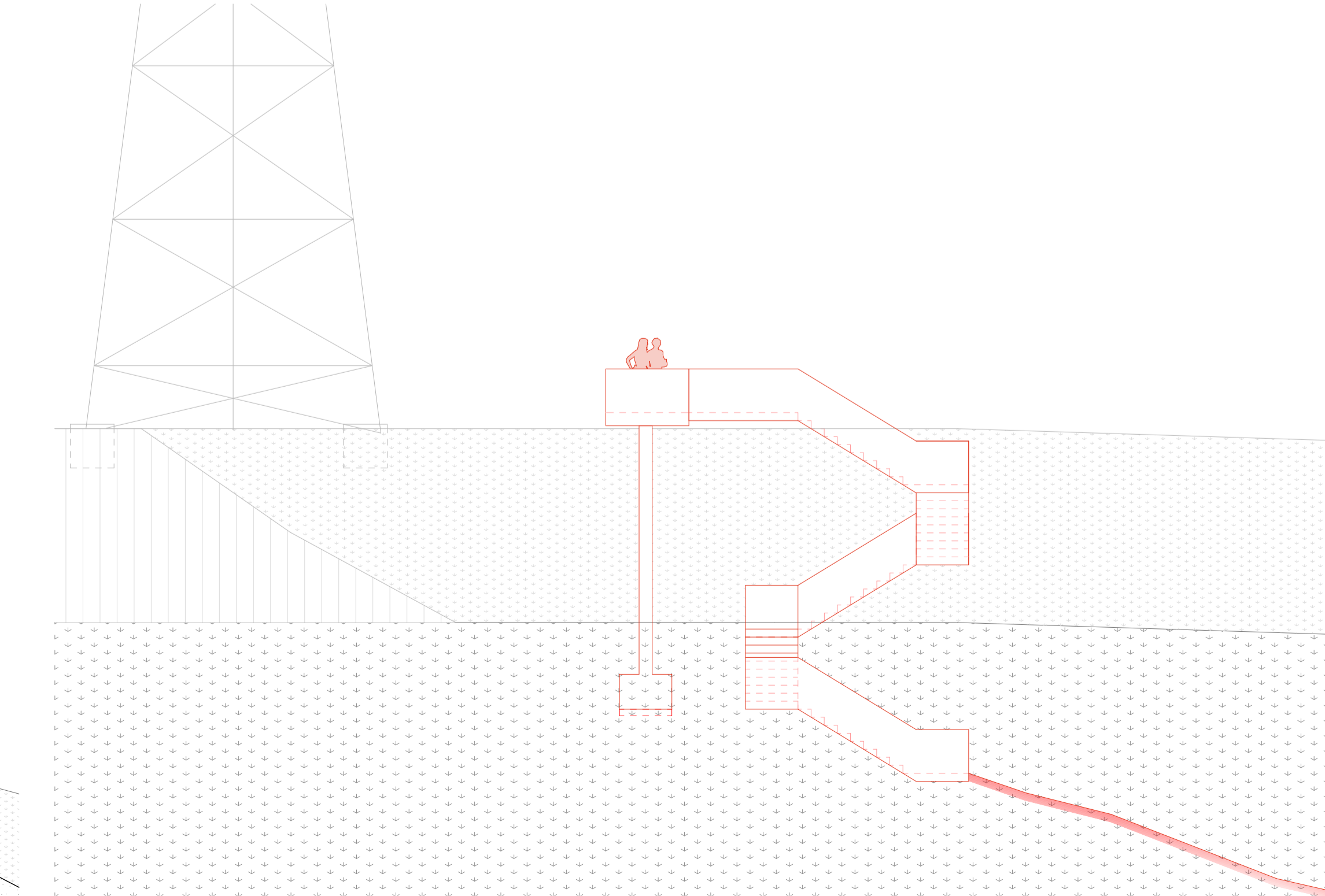
ZOOM POSIZIONAMENTO PASSERELLA 1:500



SVINCOLO VIA PENATE 1:100



SEZIONE A-A _ PASSERELLA PEDONALE 1:100



SEZIONE B-B _ PASSERELLA PEDONALE 1:100

SVINCOLO VIA PENATE E PROSEGUIMENTO DEL PERCORSO_ 1:2000