



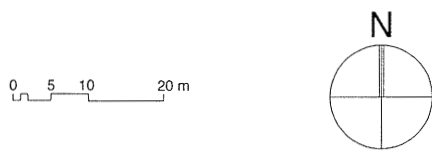
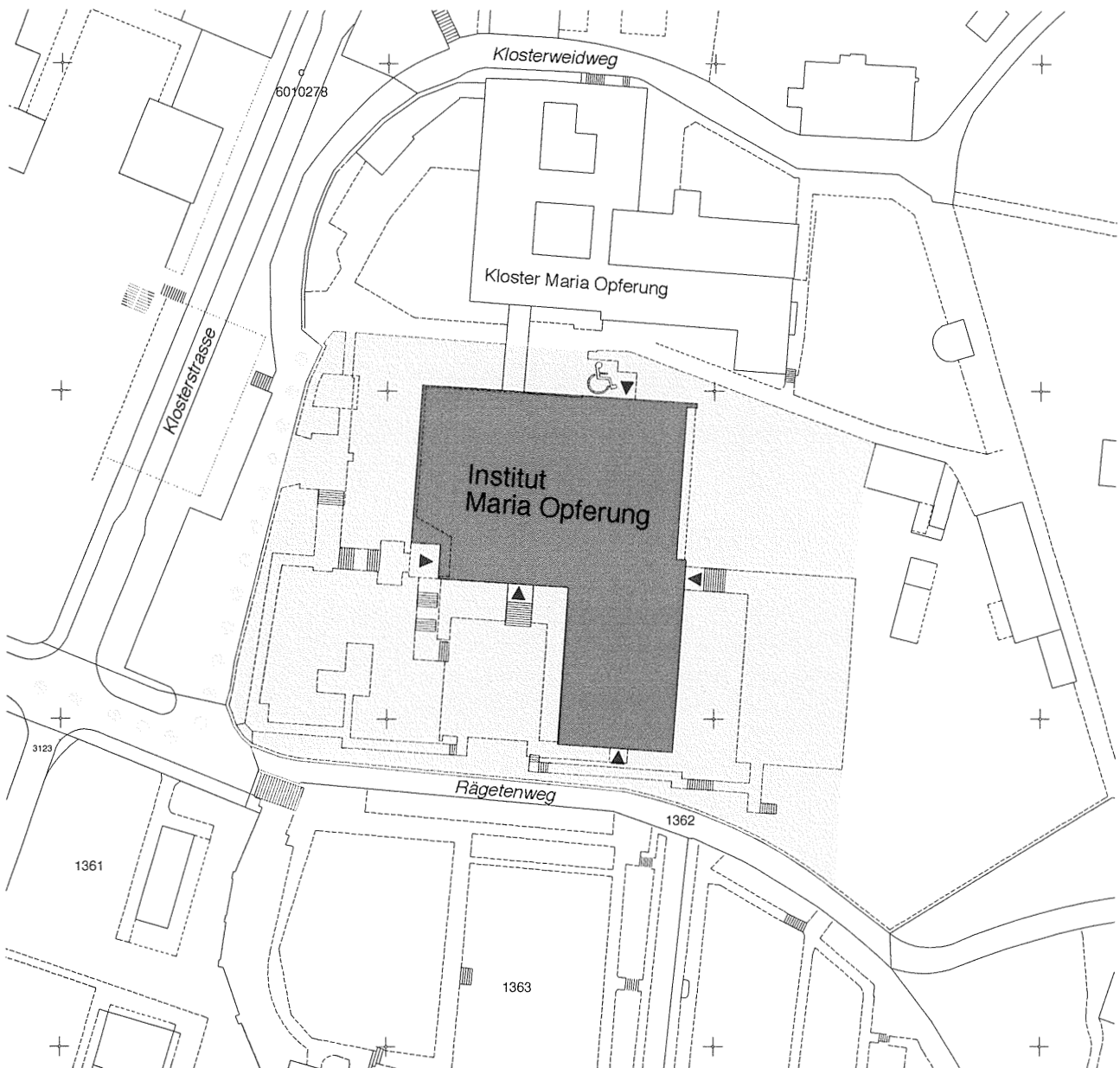


-  Schulgebäude
Institut Maria Opferung
-  Aussenflächen
-  Zugänge
-  Direkte Zufahrt

Nutzungsstudie Institut Maria Opferung

Situation Mst. 1:1000

Beilage zu Bericht und Antrag des
Stadtrates vom 28. Januar 2003






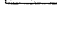





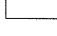
Zug, 15. Januar 2003

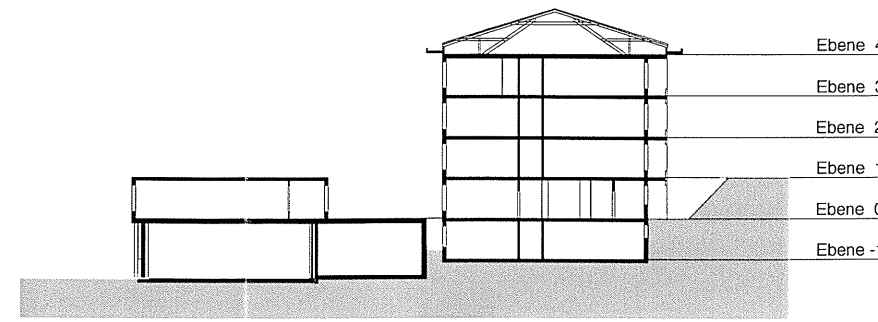
Nutzungsstudie Institut Maria Opferung

Generelle Nutzungsverteilung:

- Heilpädagogische Schule HPS
- Therapiestelle für Psychomotorik

Beilage zu Bericht und Antrag des
Stadtrates vom 28. Januar 2003

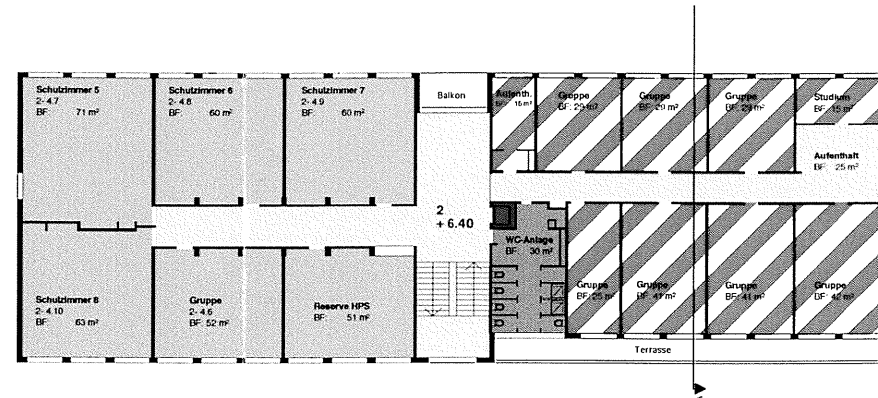
-  Heilpädagogische Schule HPS
-  Therapiestelle für Psychomotorik
-  Nutzung durch Kloster Maria Opferung
-  Option auf Nutzung durch Stadt ab 1. Juli 2004
-  Sanitär- und Putzräume
-  Erschließung
-  Lift
-  Lage Eingang
-  Installationsräume
-  Wand abtragen



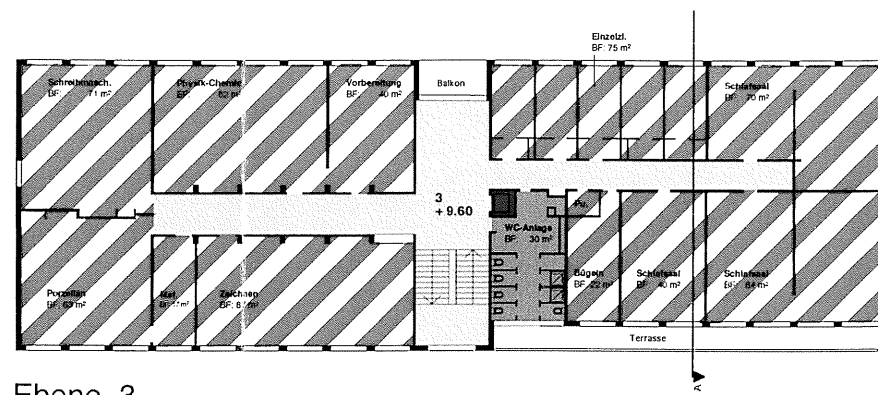
Schnitt A - A



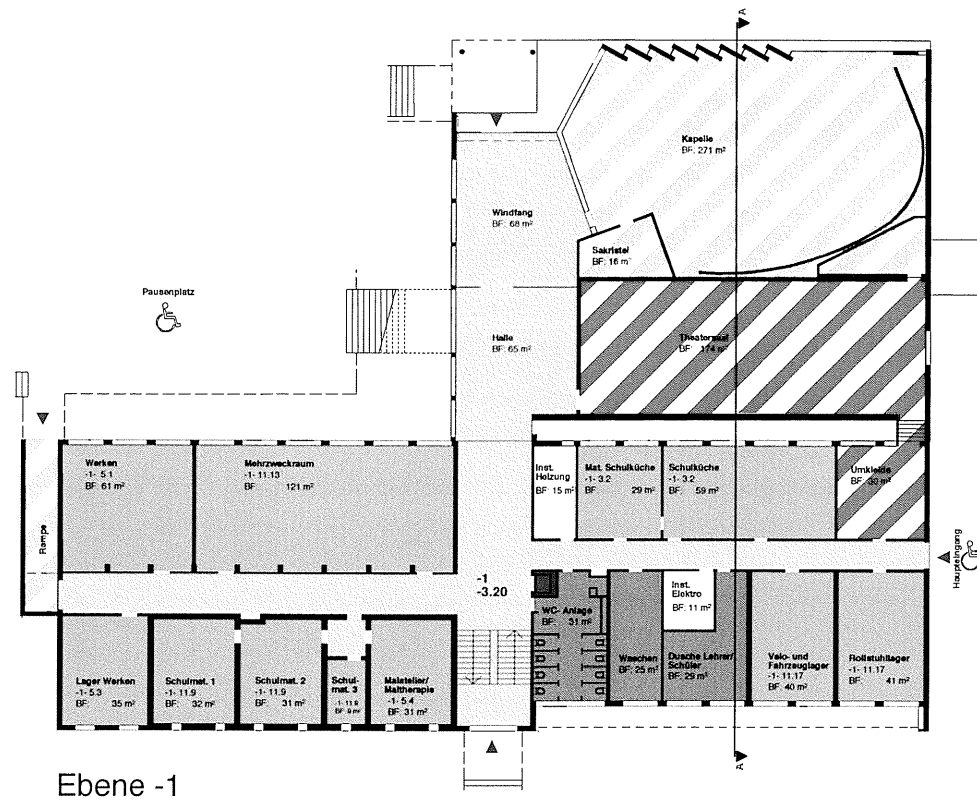
Ebene 1



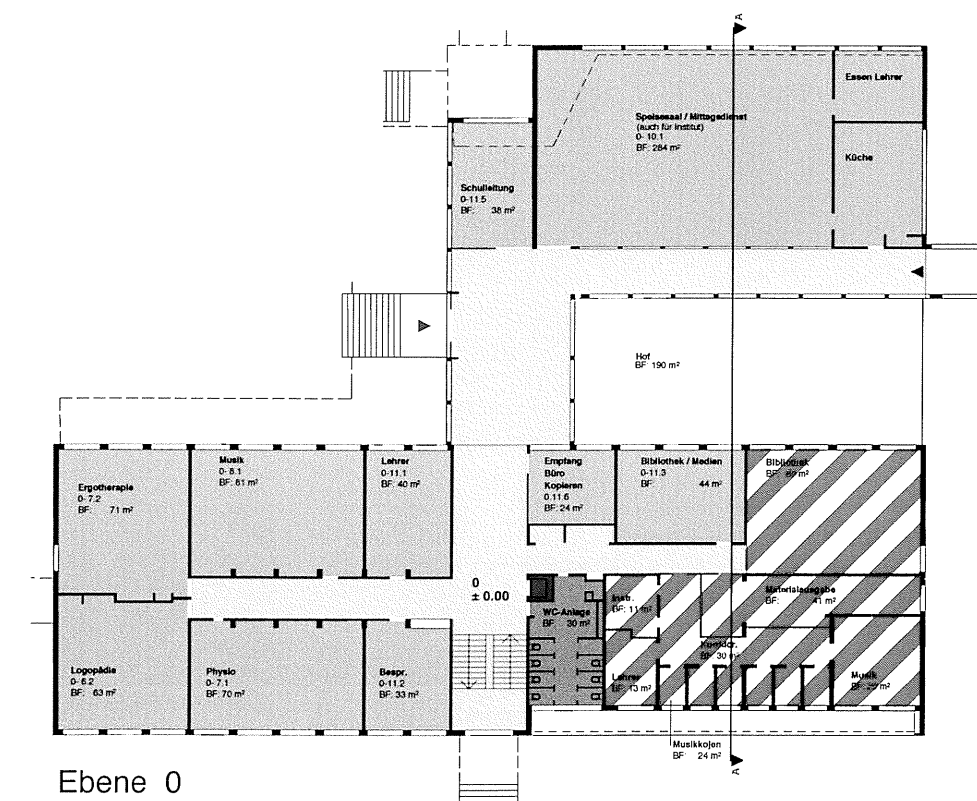
Ebene 2



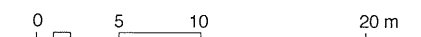
Ebene 3



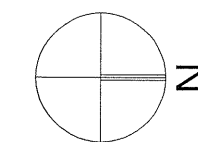
Ebene -1



Ebene 0



Originalmassstab 1: 200



Zug, 15. Januar 2003