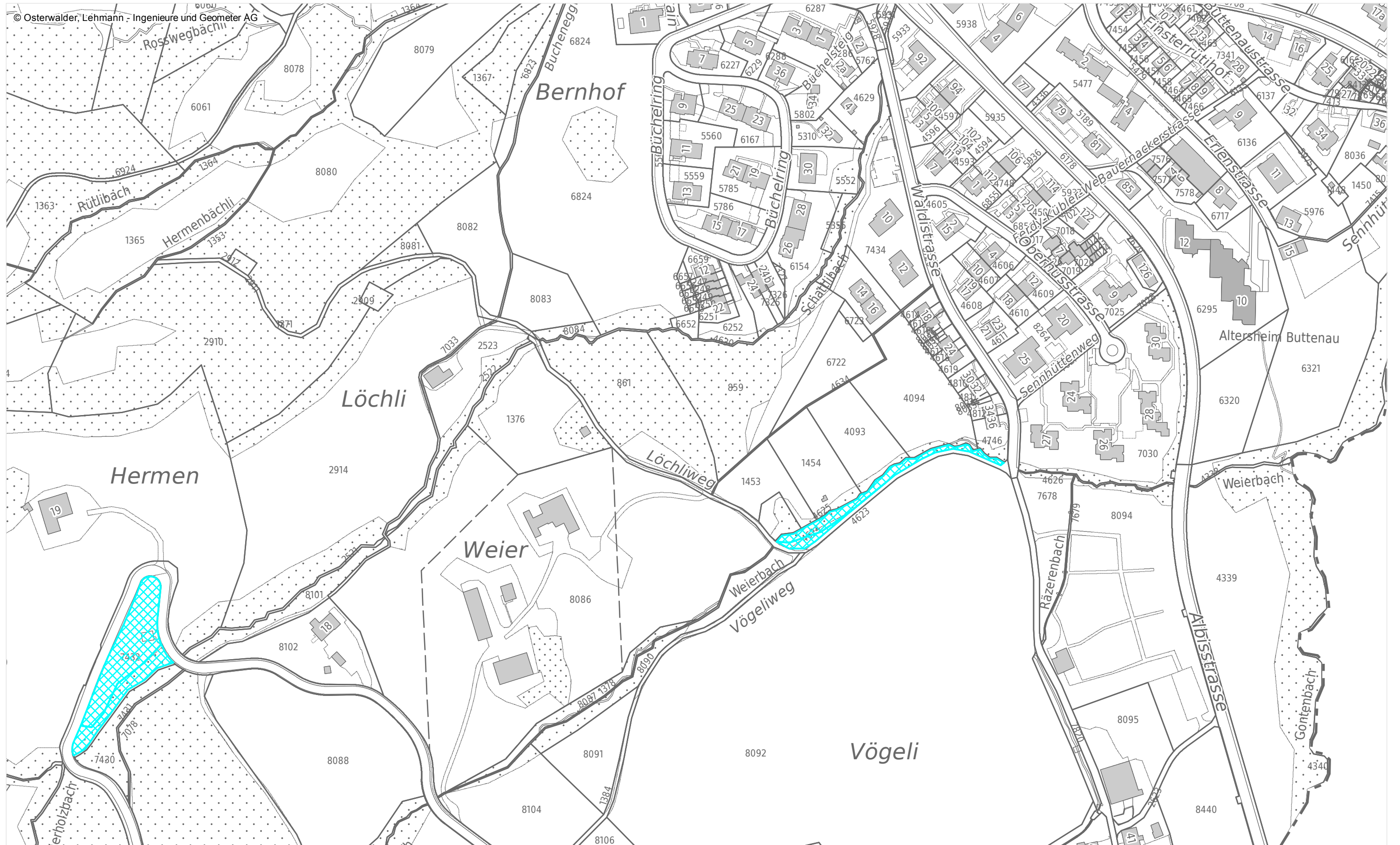


Situationsplan webGIS

Masstab 1:2 500

© Osterwalder, Lehmann - Ingenieure und Geometer AG



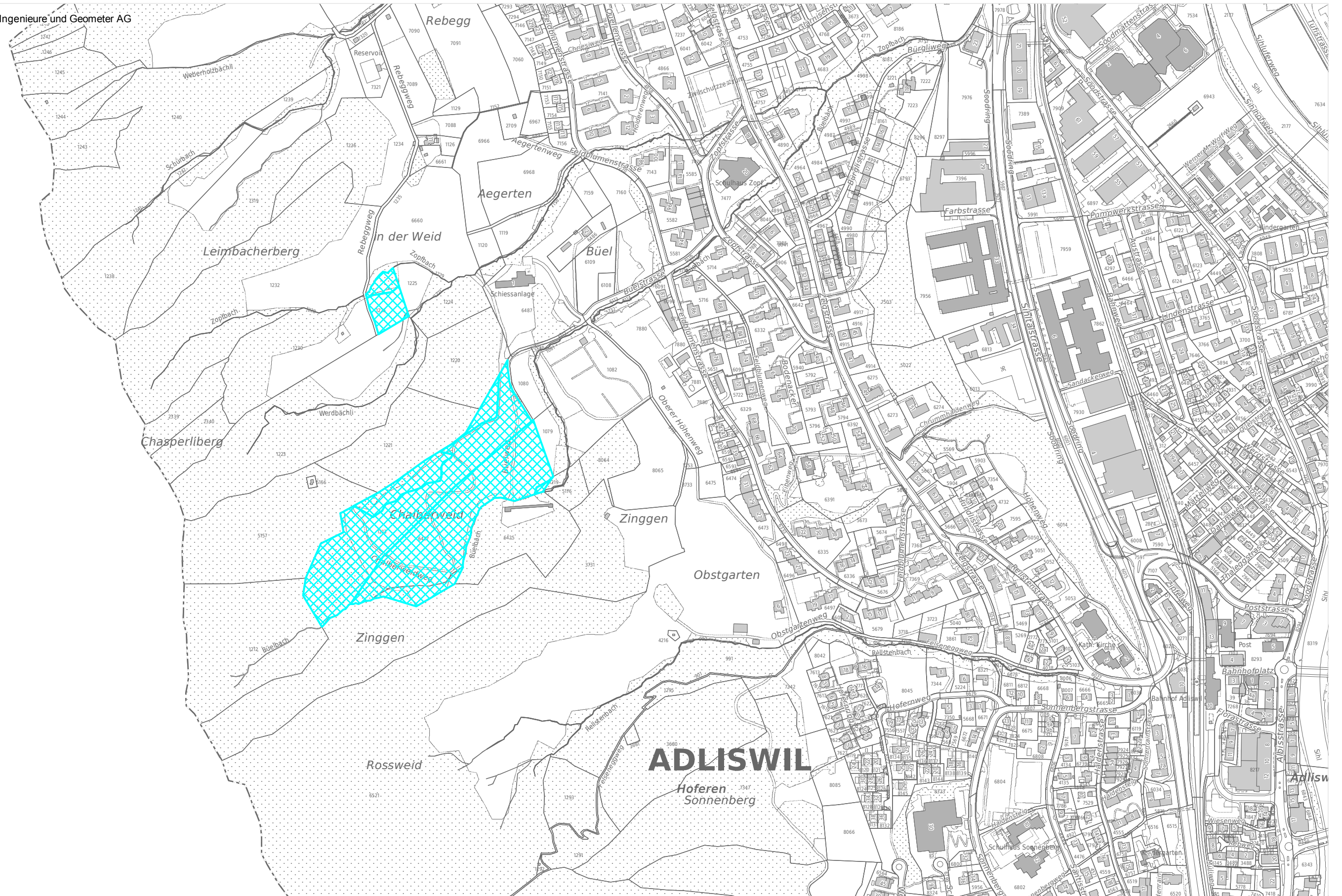
30.01.2020 Adliswil Stadt Standard (gd8134)



Situationsplan webGIS

Masstab 1:5 000

© Osterwalder, Lehmann - Ingenieure und Geometer AG



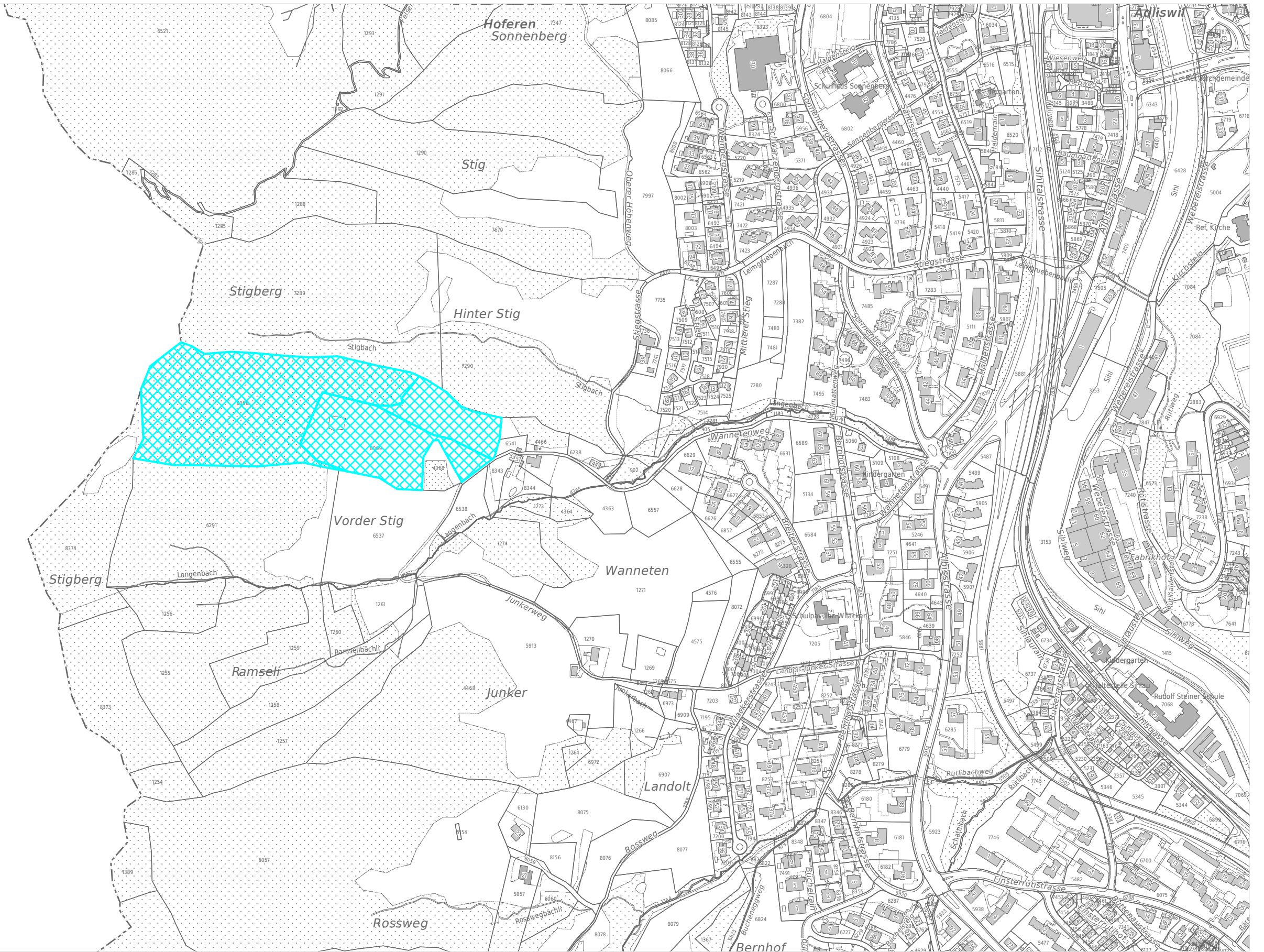
30.01.2020 Adliswil Stadt Standard (gd8134)



Situationsplan webGIS

Masstab 1:5 000

© Osterwalder, Lehmann - Ingenieure und Geometer AG



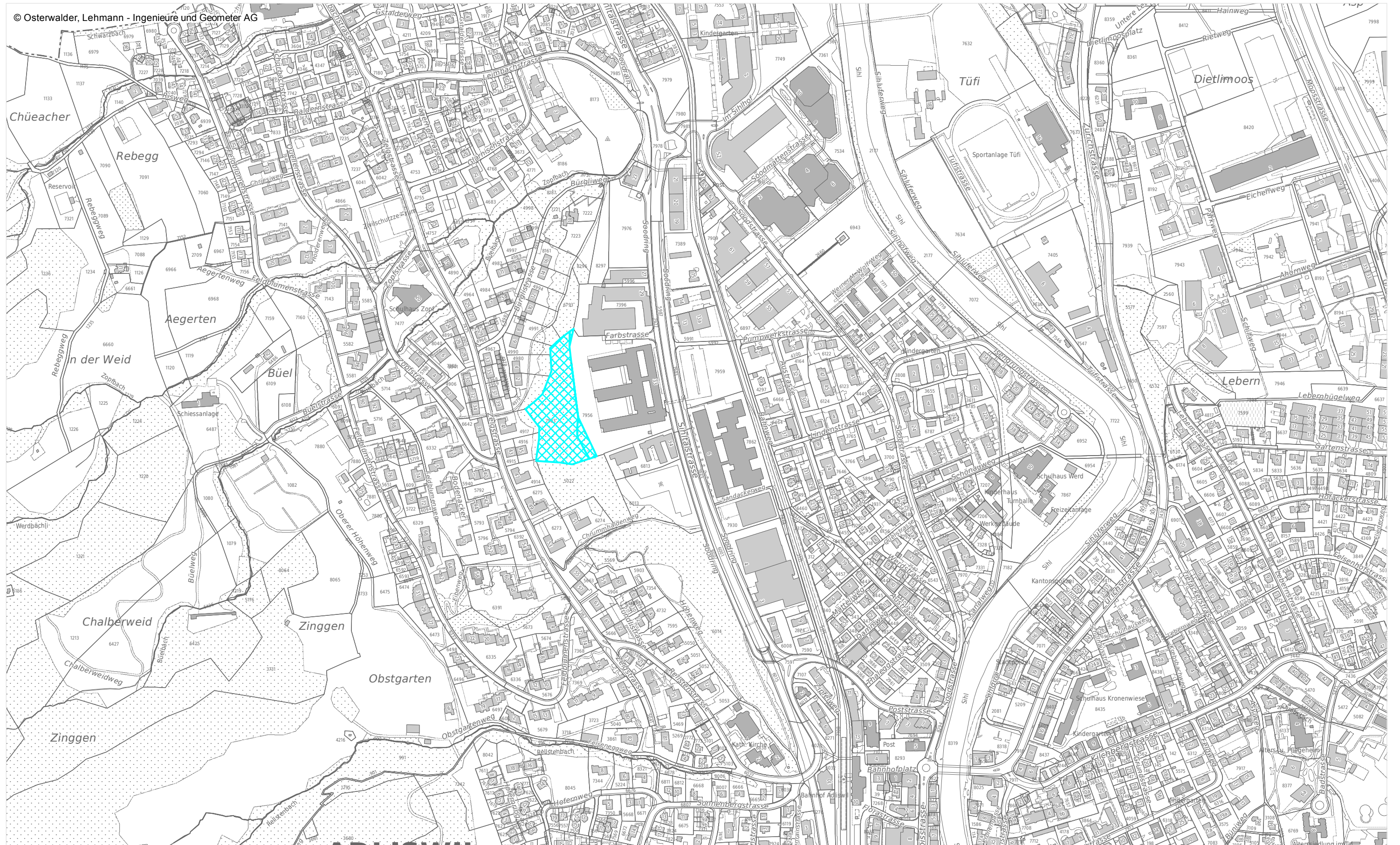
30.01.2020 Adliswil Stadt Standard (gd8134)



Situationsplan webGIS

Masstab 1:5 000

© Osterwalder, Lehmann - Ingenieure und Geometer AG



30.01.2020 Adliswil Stadt Standard (gd8134)

0 100m

